

## Moesin (D554) polyclonal antibody

Catalog: BCP01110

Host: Rabbit

Reactivity: Human,Mouse,Rat

### BackGround:

Moesin is a member of the ERM (Ezrin-Radixin-Moesin) protein family, which possesses structural and probably functional relationships; they function as plasma membrane-actin cytoskeleton linkers and participate in the formation of specialized domains of the plasma membrane and are all localized to the submembranous cytoskeleton. Moesin is widely expressed in different tissues in cells, where it is localized to filopodia and other membranous protrusions that are important for cell-cell recognition and signalling and for cell movement. The antibody has been used to inhibit both the binding of proteoglycan sulfate to smooth muscle cells, and the infectivity of measles virus.

### Product:

Rabbit IgG, 1mg/ml in PBS with 0.02% sodium azide, 50% glycerol, pH7.2

### Molecular Weight:

~ 78 kDa

### Swiss-Prot:

P26038

### Purification&Purity:

The antibody was affinity-purified from rabbit antiserum by affinity-chromatography using epitope-specific immunogen and the purity is > 95% (by SDS-PAGE).

### Applications:

WB: 1:500~1:1000

IHC: 1:50~1:200

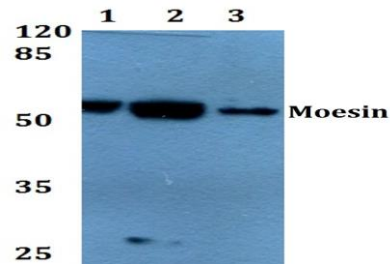
### Storage&Stability:

Store at 4 °C short term. Aliquot and store at -20 °C long term. Avoid freeze-thaw cycles.

### Specificity:

Moesin (D554) polyclonal antibody detects endogenous levels of Moesin protein.

### DATA:



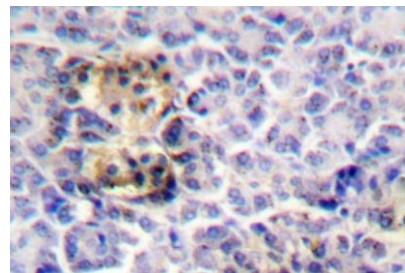
Western blot (WB) analysis of Moesin (D554) polyclonal antibody at 1:500 dilution

Lane1:A549 whole cell lysate(40ug)

Lane2:Hela whole cell lysate(40ug)

Lane3:PMVEC whole cell lysate(40ug)

Lane4:BV2 whole cell lysate(40ug)



Immunohistochemistry (IHC) analyzes of Moesin (D554) pAb in paraffin-embedded human pancreas tissue.

### Note:

For research use only, not for use in diagnostic procedure.