

## Met (P978) polyclonal antibody

Catalog: BCP01094

Host: Rabbit

Reactivity: Human,Mouse,Rat

### BackGround:

Met, a high affinity tyrosine kinase receptor for hepatocyte growth factor (HGF, also known as scatter factor) is a disulfide-linked heterodimer made of 45 kDa  $\alpha$ - and 145 kDa  $\beta$ -subunits. The  $\alpha$ -subunit and the amino-terminal region of the  $\beta$ -subunit form the extracellular domain. The remainder of the  $\beta$ -chain spans the plasma membrane and contains a cytoplasmic region with tyrosine kinase activity. Interaction of Met with HGF results in autophosphorylation at multiple tyrosines, which recruit several downstream signaling components, including Gab1, c-Cbl, and PI3 kinase. These fundamental events are important for all of the biological functions involving Met kinase activity. The addition of a phosphate at cytoplasmic Tyr1003 is essential for Met protein ubiquitination and degradation. Phosphorylation at Tyr1234/1235 in the Met kinase domain is critical for kinase activation. Phosphorylation at Tyr1349 in the Met cytoplasmic domain provides a direct binding site for Gab1. Research studies have shown that altered Met levels and/or tyrosine kinase activities are found in several types of tumors, including renal, colon, and breast. Thus, investigators have concluded that Met is an attractive potential cancer therapeutic and diagnostic target.

### Product:

Rabbit IgG, 1mg/ml in PBS with 0.02% sodium azide, 50% glycerol, pH7.2

### Molecular Weight:

~ 140, 170 kDa

### Swiss-Prot:

P08581

### Purification&Purity:

The antibody was affinity-purified from rabbit antiserum by affinity-chromatography using epitope-specific immunogen and the purity is > 95% (by SDS-PAGE).

### Applications:

WB: 1:500~1:1000

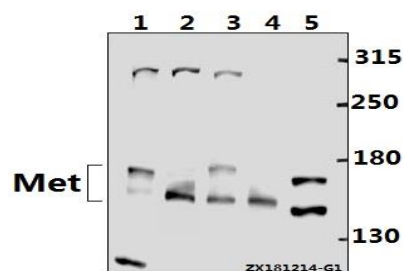
### Storage&Stability:

Store at 4 °C short term. Aliquot and store at -20 °C long term. Avoid freeze-thaw cycles.

### Specificity:

Met (P978) polyclonal antibody detects endogenous levels of Met protein.

### DATA:



Western blot (WB) analysis of Met (P978) polyclonal antibody at 1:500 dilution

Lane1:CT26 whole cell lysate(40ug)

Lane2:A2780 whole cell lysate(40ug)

Lane3:HeLa whole cell lysate(40ug)

Lane4:A549 whole cell lysate(40ug)

Lane5:The Stomach tissue lysate of Rat(40ug)

### Note:

For research use only, not for use in diagnostic procedure.