

## MEK1 (T286) polyclonal antibody

Catalog: BCP01085

Host: Rabbit

Reactivity: Human,Mouse,Rat

### BackGround:

MEK1 (Mitogen activated protein kinase kinase 1) catalyzes the concomitant phosphorylation of a threonine and a tyrosine residue in a Thr-Glu-Tyr sequence located in MAP kinases. MEK1 activates ERK1 and ERK2 MAP kinases. Mitogen activated protein kinase kinase 2 (MEK2 or MAPKK2) is a member of a family of tyrosine/threonine protein kinases that activate the ERK1 and 2 and MAPK enzymes by phosphorylating both residues within the threonine/glutamate/tyrosine (TEY) motif in the activation loop. MEK1 and 2 are also activated by dual phosphorylation, which occurs on serine 218 and 222, in the activation loop of the MEK. Threonine 292 of MEK1 is phosphorylated by ERK 2, which serves as a negative feedback loop by suppressing activation of MEK1.

### Product:

Rabbit IgG, 1mg/ml in PBS with 0.02% sodium azide, 50% glycerol, pH7.2

### Molecular Weight:

~ 45 kDa

### Swiss-Prot:

Q02750

### Purification&Purity:

The antibody was affinity-purified from rabbit antiserum by affinity-chromatography using epitope-specific immunogen and the purity is > 95% (by SDS-PAGE).

### Applications:

WB: 1:500~1:1000

IHC: 1:50~1:200

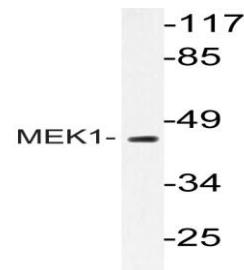
### Storage&Stability:

Store at 4 °C short term. Aliquot and store at -20 °C long term. Avoid freeze-thaw cycles.

### Specificity:

MEK1 (T286) polyclonal antibody detects endogenous levels of MEK1 protein.

### DATA:



Western blot (WB) analysis of MEK-1 (T286) pAb at 1:500 dilution

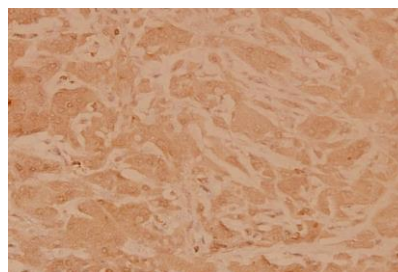
Lane1:PC3 whole cell lysate(40ug)

Lane2:A549 whole cell lysate(40ug)

Lane3:K562 whole cell lysate(40ug)

Lane4:C6 whole cell lysate(40ug)

Lane5:3T3-L1 whole cell lysate(40ug)



Immunohistochemistry (IHC) analyzes of MEK1 (T286) pAb in paraffin-embedded human breast carcinoma tissue at 1:100.

### Note:

For research use only, not for use in diagnostic procedure.