

MEK Kinase-1 (W197) polyclonal antibody

Catalog: BCP01080

Host: Rabbit

Reactivity: Human,Mouse,Rat

BackGround:

Mitogen-activated protein (MAP) kinase cascades are activated by various extracellular stimuli, including growth factors. The MEK kinases (also designated MAP kinase kinases, MKKKs, MAP3Ks or MEKKs) phosphorylate and thereby activate the MEKs (also called MAP kinase kinases or MKKs), including ERK, JNK and p38. These activated MEKs in turn phosphorylate and activate the MAP kinases. The MEK kinases include Raf-1, Raf-B, Mos, MEK kinase-1, MEK kinase-2, MEK kinase-3, MEK kinase-4 and ASK 1 (MEK kinase-5). MEK kinase-1 activates the ERK and c-Jun NH2-terminal kinase (JNK) pathways by phosphorylation of MAP2K1 and MAP2K4, and also activates the central protein kinases of the NFκB pathway, CHUK and IKBKB.

Product:

Rabbit IgG, 1mg/ml in PBS with 0.02% sodium azide, 50% glycerol, pH7.2

Molecular Weight:

~ 72 kDa

Swiss-Prot:

Q13233

Purification&Purity:

The antibody was affinity-purified from rabbit antiserum by affinity-chromatography using epitope-specific immunogen and the purity is > 95% (by SDS-PAGE).

Applications:

WB: 1:500~1:1000

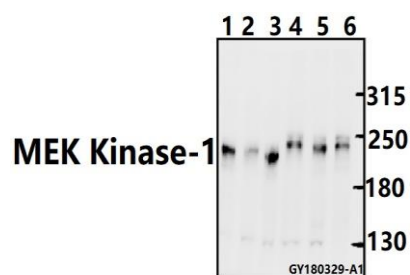
Storage&Stability:

Store at 4 °C short term. Aliquot and store at -20 °C long term. Avoid freeze-thaw cycles.

Specificity:

MEK Kinase-1 (W197) polyclonal antibody detects endogenous levels of MEK Kinase-1 protein.

DATA:



Western blot (WB) analysis of MEK Kinase-1 (W197) pAb at 1:500 dilution

Lane1:HeLa whole cell lysate(40ug)

Lane2:H9C2 whole cell lysate(40ug)

Lane3:AML-12 whole cell lysate(40ug)

Lane4:HCT116 whole cell lysate(40ug)

Lane5:HepG2 whole cell lysate(40ug)

Lane6:Panc1 whole cell lysate(40ug)

Note:

For research use only, not for use in diagnostic procedure.