

Mcl-1 (S121) polyclonal antibody

Catalog: BCP01069

Host: Rabbit

Reactivity: Human, Mouse, Rat

BackGround:

B cell CLL/lymphoma-2 (Bcl-2) blocks cell death following a variety of stimuli and confers a death-sparing effect to certain hematopoietic cell lines following growth factor withdrawal. Myeloid cell leukemia-1 (Mcl-1) shares sequence homology with Bcl-2 and further resembles Bcl-2 in that its expression promotes cell viability. p53 and Mcl-1 demonstrate opposing effects on mitochondrial apoptosis by mediating Bcl-2 antagonist killer (Bak) activity. Mcl-1 is an important and specific regulator that is necessary for the homeostasis of early hematopoietic progenitors. Glycogen synthase kinase-3 (GSK-3) controls Mcl-1 stability, which has an effect on the regulation of apoptosis by growth factors PI 3-kinase and Akt. Mice with a deficiency of the Mcl-1 protein show a significant reduction in B and T lymphocytes similar to the effects observed in IL-7- or IL-7R-deficient mice.

Product:

Rabbit IgG, 1mg/ml in PBS with 0.02% sodium azide, 50% glycerol, pH7.2

Molecular Weight:

~ 37 kDa

Swiss-Prot:

Q07820

Purification&Purity:

The antibody was affinity-purified from rabbit antiserum by affinity-chromatography using epitope-specific immunogen and the purity is > 95% (by SDS-PAGE).

Applications:

WB: 1:500~1:1000

IHC: 1:50~1:200

IP: 1:50~1:200

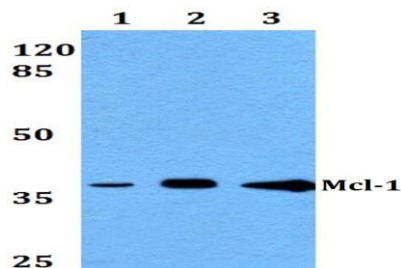
Storage&Stability:

Store at 4 °C short term. Aliquot and store at -20 °C long term. Avoid freeze-thaw cycles.

Specificity:

MCL1 (S121) polyclonal antibody detects endogenous levels of MCL1 protein.

DATA:

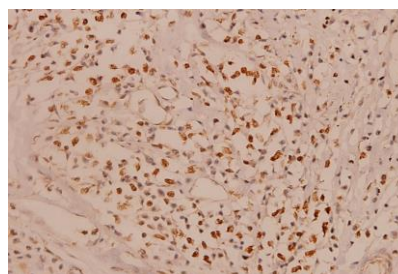


Western blot (WB) analysis of Mcl-1 (S121) polyclonal antibody at 1:500 dilution

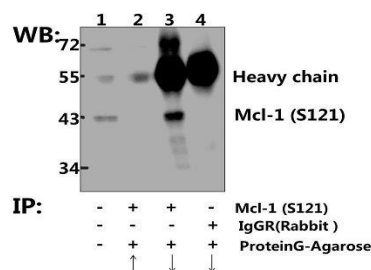
Lane1:HCT116 whole cell lysate(40ug)

Lane2:PC3 whole cell lysate(40ug)

Lane3:HEK293T whole cell lysate(40ug)



Immunohistochemistry (IHC) analyzes of Mcl-1 (S121) pAb in paraffin-embedded human breast carcinoma tissue at 1:100.



Immunoprecipitation of HEK293T cell lysate using Mcl-1 (S121) polyclonal antibody (Sepharose Bead Conjugate) #BD0048(lane 2 and lane 3) and Nonspecific IgG Control (Sepharose Bead Conjugate) #BD0048 (lane 4).Lane 1 is 30% input.The western blot was probed using Mcl-1 (S121). “ ↑ ” (supernatant) ; “ ↓ ”(deposition)

Note:

For research use only, not for use in diagnostic procedure.

