

**MAST3 (R1065) polyclonal antibody**

Catalog: BCP01064

Host: Rabbit

Reactivity: Human,Mouse,Rat

**BackGround:**

MAST3, also named as KIAA0561, belongs to the protein kinase superfamily and AGC Ser/Thr protein kinase family. MAST3 in antigen-presenting cells and in lymphocytes. The knockdown of MAST3 specifically decreased Toll-like receptor-4-dependent NF-kappaB activity.

**Product:**

Rabbit IgG, 1mg/ml in PBS with 0.02% sodium azide, 50% glycerol, pH7.2

**Molecular Weight:**

~ 143 kDa

**Swiss-Prot:**

O60307

**Purification&Purity:**

The antibody was affinity-purified from rabbit antiserum by affinity-chromatography using epitope-specific immunogen and the purity is > 95% (by SDS-PAGE).

**Applications:**

WB: 1:500~1:1000

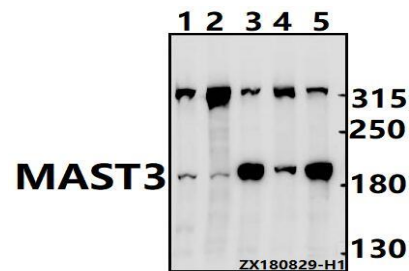
**Storage&Stability:**

Store at 4 °C short term. Aliquot and store at -20 °C long

term. Avoid freeze-thaw cycles.

**Specificity:**

MAST3 (R1065) pAb detects endogenous levels of MAST3 protein.

**DATA:**

Western blot (WB) analysis of MAST3 (R1065) pAb at 1:500 dilution

Lane1:CT26 whole cell lysate(40ug)

Lane2:PC12 whole cell lysate(40ug)

Lane3:HEK293T whole cell lysate(40ug)

Lane4:A375 whole cell lysate(40ug)

Lane5:HCT116 whole cell lysate(40ug)

**Note:**

For research use only, not for use in diagnostic procedure.