

MAP1LC3B (D23) polyclonal antibody

Catalog: BCP01053

Host: Rabbit

Reactivity: Human, Mouse, Rat

BackGround:

MAP1LC3B, a homolog of Apg8p, is essential for autophagy and associated to the autophagosome membranes after processing. Two forms of LC3 β , the cytosolic LC3-I and the membrane-bound LC3-II, are produced post-translationally. LC3-I is formed by the removal of the C-terminal 22 amino acids from newly synthesized LC3 β , followed by the conversion of a fraction of LC3-I into LC3-II. LC3 enhances fibronectin mRNA translation in ductus arteriosus cells through association with 60S ribosomes and binding to an AU-rich element in the 3' untranslated region of fibronectin mRNA. This facilitates sorting of fibronectin mRNA onto rough endoplasmic reticulum and translation. MAP LC3 β may also be involved in formation of autophagosomal vacuoles. It is expressed primarily in heart, testis, brain and skeletal muscle.

Product:

Rabbit IgG, 1mg/ml in PBS with 0.02% sodium azide, 50% glycerol, pH7.2

Molecular Weight:

~ 16-18 kDa

Swiss-Prot:

Q9GZQ8

Purification&Purity:

The antibody was affinity-purified from rabbit antiserum by affinity-chromatography using epitope-specific immunogen and the purity is > 95% (by SDS-PAGE).

Applications:

WB: 1:500~1:1000

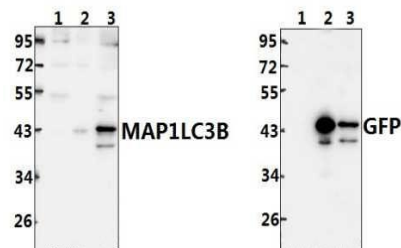
IHC: 1:50~1:200

Storage&Stability:

Store at 4 °C short term. Aliquot and store at -20 °C long term. Avoid freeze-thaw cycles.

Specificity:

MAP1LC3B (D23) polyclonal antibody detects endogenous levels of LC3-I and LC3-II protein.

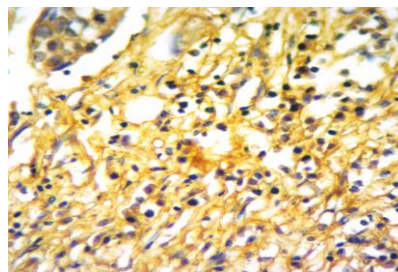
DATA:

Western blot (WB) analysis of MAP1LC3B (D23) polyclonal antibody at 1:500 dilution

Lane1:HEK293T whole cell lysate(20ug)

Lane2:HEK293T transfected with pEGFP-C3-LC3A whole cell lysate(20ug)

Lane3:HEK293T transfected with pEGFP-C3-LC3B whole cell lysate(20ug)



Immunohistochemistry of paraffin-embedded Human Breast cancer using MAP1LC3B antibody at dilution of 1:50.

Note:

For research use only, not for use in diagnostic procedure.