

LTB4DH (L105) polyclonal antibody

Catalog: BCP01043

Host: Rabbit

Reactivity: Human, Mouse

BackGround:

The NADP(H)-dependent enzyme leukotriene 12-hydroxy dehydrogenase (LTB4DH) catalyzes double bond reductions and oxo-reductions in lipoxins (15-oxo-lipoxin A₄), leukotrienes (leukotriene B₄) and E/F prostaglandins (15-oxo prostaglandins). The reactions mediated by LTB4DH constitute an important inactivation pathway for these key lipid mediators involved in inflammation. LTB4DH belongs to the medium-chain dehydrogenase/reductase enzyme family.

Product:

Rabbit IgG, 1mg/ml in PBS with 0.02% sodium azide, 50% glycerol, pH7.2

Molecular Weight:

~ 36 kDa

Swiss-Prot:

Q14914

Purification&Purity:

The antibody was affinity-purified from rabbit antiserum by affinity-chromatography using epitope-specific immunogen and the purity is > 95% (by SDS-PAGE).

Applications:

WB: 1:500~1:1000

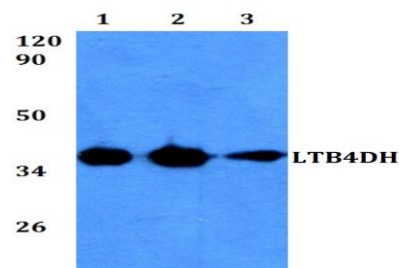
Storage&Stability:

Store at 4 °C short term. Aliquot and store at -20 °C long term. Avoid freeze-thaw cycles.

Specificity:

LTB4DH (L105) polyclonal antibody detects endogenous levels of LTB4DH protein.

DATA:



Western blot (WB) analysis of LTB4DH (L105) pAb at 1:500 dilution

Lane1: The Kidney tissue lysate of Mouse(40ug)

Lane2: HepG2 whole cell lysate(10ug)

Lane3: HEK293T whole cell lysate(10ug)

Note:

For research use only, not for use in diagnostic procedure.