

## LONP2 polyclonal antibody

Catalog: BCP01039

Host: Rabbit

Reactivity: Human,Mouse,Rat

### BackGround:

LONP2 (lon peptidase 2, peroxisomal), also known as LONP, LONPL or peroxisomal lon protease, is an 852 amino acid protein belonging to the peptidase S16 family. LONP2 assists in import of peroxisomal matrix proteins and is required for PTS2 (type 2 peroxisome targeting signal)-containing protein processing. As an ATP-dependent serine protease, LONP2 plays a role in degradation of polypeptides that are unassembled or incorrectly folded. The gene encoding LONP2 maps to human chromosome 16, which encodes over 900 genes and comprises nearly 3% of the human genome. The GAN gene is located on chromosome 16 and, with mutation, may lead to giant axonal neuropathy, a nervous system disorder characterized by increasing malfunction with growth. The rare disorder Rubinstein-Taybi syndrome is also associated with chromosome 16, as is Crohn's disease, which is a gastrointestinal inflammatory condition.

### Product:

Rabbit IgG, 1mg/ml in PBS with 0.02% sodium azide, 50% glycerol, pH7.2

### Molecular Weight:

~ 96 kDa

### Swiss-Prot:

Q86WA8

### Purification&Purity:

The antibody was affinity-purified from rabbit antiserum by affinity-chromatography using epitope-specific immunogen and the purity is > 95% (by SDS-PAGE).

### Applications:

WB: 1:500~1:1000

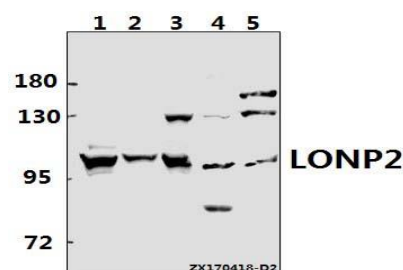
### Storage&Stability:

Store at 4 °C short term. Aliquot and store at -20 °C long term. Avoid freeze-thaw cycles.

### Specificity:

LONP2 pAb detects endogenous levels of LONP2 protein.

### DATA:



Western blot (WB) analysis of LONP2 pAb at 1:500 dilution

Lane1:A549 whole cell lysate(40ug)

Lane2:A2780 whole cell lysate(40ug)

Lane3:HEK293T whole cell lysate(40ug)

Lane4:AML-12 whole cell lysate(40ug)

Lane5:H9C2 whole cell lysate(40ug)

### Note:

For research use only, not for use in diagnostic procedure.