

## LKB1 (R425) polyclonal antibody

Catalog: BCP01035

Host: Rabbit

Reactivity: Human, Mouse, Rat

### BackGround:

LKB1, a member of the serine/threonine kinase family, is a tumor suppressor. Physically associates with p53, it regulates specific p53 dependent apoptosis pathways. LKB1 protein is present in both the cytoplasm and nucleus of living cells and translocates to mitochondria during apoptosis. Restoring LKB1 activity into cancer cell lines defective for its expression results in a G1 cell cycle arrest. Mutations in LKB1 gene are associated with Peutz Jeghers syndrome, an autosomal dominant disorder characterized by the growth of polyps in the gastrointestinal tract, pigmented macules on the skin and mouth, and other neoplasms. LKB1 functions as a master upstream protein kinase, regulating AMPK related kinases as well as AMPK.

### Product:

Rabbit IgG, 1mg/ml in PBS with 0.02% sodium azide, 50% glycerol, pH7.2

### Molecular Weight:

~ 48, 54 kDa

### Swiss-Prot:

Q15831

### Purification&Purity:

The antibody was affinity-purified from rabbit antiserum by affinity-chromatography using epitope-specific immunogen and the purity is > 95% (by SDS-PAGE).

### Applications:

WB: 1:500~1:1000

IHC: 1:50~1:200

IF: 1:50~1:200

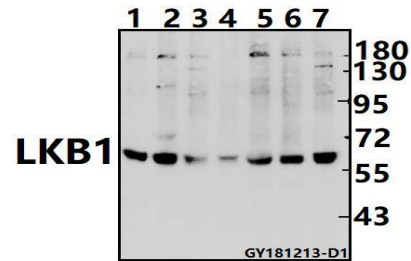
### Storage&Stability:

Store at 4 °C short term. Aliquot and store at -20 °C long term. Avoid freeze-thaw cycles.

### Specificity:

LKB1 (R425) polyclonal antibody detects endogenous levels of LKB1 protein.

### DATA:



Western blot (WB) analysis of LKB1 (R425) pAb at 1:1000 dilution

Lane1:MCF-7 whole cell lysate(40ug)

Lane2:H9C2 whole cell lysate(40ug)

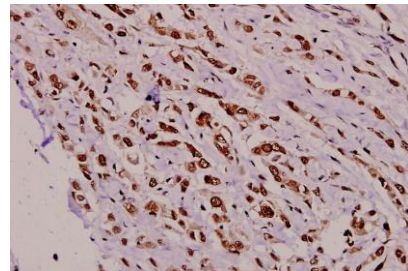
Lane3:PMVEC whole cell lysate(40ug)

Lane4:The Testis tissue lysate of Mouse (40ug)

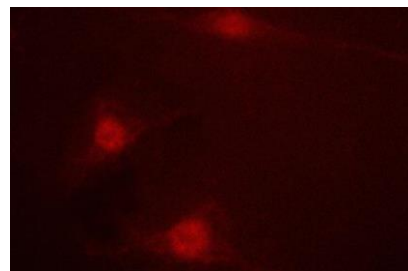
Lane5:EC9706 whole cell lysate(40ug)

Lane6:H1792 whole cell lysate(40ug)

Lane7:SK-OVCAR3 whole cell lysate(40ug)



Immunohistochemistry (IHC) analyzes of LKB1 (R425) pAb in paraffin-embedded human breast carcinoma tissue at 1:100.



### Note:

For research use only, not for use in diagnostic procedure.