

LI-cadherin (T363) polyclonal antibody

Catalog: BCP01034

Host: Rabbit

Reactivity: Human, Mouse

BackGround:

The cadherins are a family of Ca⁺⁺-dependent adhesion molecules that function to mediate cell-cell binding critical to the maintenance of tissue structure and morphogenesis. Cadherins each contain a large extracellular domain at the amino terminus, which is characterized by a series of five homologous repeats, the most distal of which is thought to be responsible for binding specificity. The relatively short carboxy terminal, intracellular domain interacts with a variety of cytoplasmic proteins, including catenin β , to regulate cadherin function. LI-cadherin (for liver-intestine-cadherin) expression is restricted to liver and intestine tissues and is specifically localized to the basolateral domain of hepatocytes and enterocytes.

Product:

Rabbit IgG, 1mg/ml in PBS with 0.02% sodium azide, 50% glycerol, pH7.2

Molecular Weight:

~90 kDa

Swiss-Prot:

Q12864

Purification&Purity:

The antibody was affinity-purified from rabbit antiserum by affinity-chromatography using epitope-specific immunogen and the purity is > 95% (by SDS-PAGE).

Applications:

WB: 1:500~1:1000

IHC: 1:50~1:200

IF: 1:200

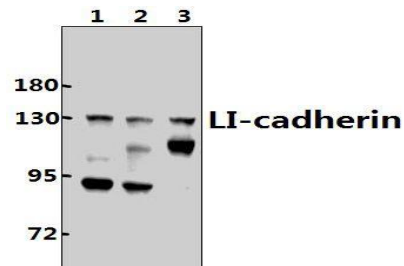
Storage&Stability:

Store at 4 °C short term. Aliquot and store at -20 °C long term. Avoid freeze-thaw cycles.

Specificity:

LI-cadherin (T363) polyclonal antibody detects endogenous levels of LI-cadherin protein.

DATA:

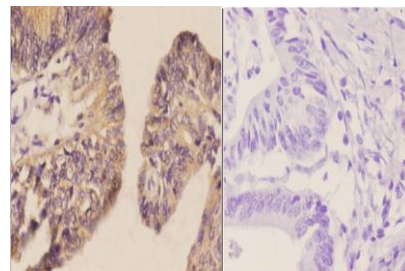


Western blot (WB) analysis of LI-cadherin (T363) Antibody at 1:2000 dilution

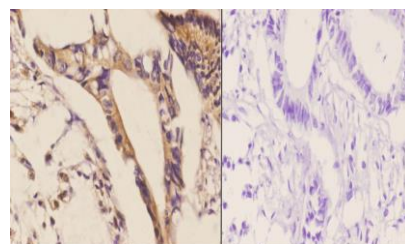
Lane1:SGC7901 whole cell lysate(40ug)

Lane2:HCT116 whole cell lysate(40ug)

Lane3:CT26 whole cell lysate(40ug)



Immunohistochemistry (IHC) analyzes of LI-cadherin (T363) pAb in paraffin-embedded human colon carcinoma tissue at 1:50. showing cell membrane staining. Negative control (the right) Using PBS instead of primary antibody, secondary antibody is Goat Anti-Rabbit IgG-biotin followed by avidin-peroxidase.



Immunohistochemistry (IHC) analyzes of LI-cadherin (T363) pAb in paraffin-embedded human rectum carcinoma tissue at 1:50. showing cell membrane staining. Negative control (the right) Using PBS instead of primary antibody, secondary antibody is Goat Anti-Rabbit IgG-biotin followed by avidin-peroxidase.

Note:

For research use only, not for use in diagnostic procedure.