

LC3 (phospho-Thr50) polyclonal antibody

Catalog: BCP01029

Host: Rabbit

Reactivity: Human, Mouse, Rat

BackGround:

Two forms of LC3 β , the cytosolic LC3-I and the membrane-bound LC3-II, are produced post-translationally. LC3-I is formed by the removal of the C-terminal 22 amino acids from newly synthesized LC3 β , followed by the conversion of a fraction of LC3-I into LC3-II. LC3 enhances fibronectin mRNA translation in ductus arteriosus cells through association with 60S ribosomes and binding to an AU-rich element in the 3' untranslated region of fibronectin mRNA. This facilitates sorting of fibronectin mRNA onto rough endoplasmic reticulum and translation. MAP LC3 β may also be involved in formation of autophagosomal vacuoles. It is expressed primarily in heart, testis, brain and skeletal muscle.

Product:

Rabbit IgG, 1mg/ml in PBS with 0.02% sodium azide, 50% glycerol, pH7.2

Molecular Weight:

~ 15 kDa

Swiss-Prot:

Q9GZQ8/Q9H492/Q9BXW4

Purification&Purity:

The antibody was affinity-purified from rabbit antiserum by affinity-chromatography using epitope-specific immunogen and the purity is > 95% (by SDS-PAGE).

Applications:

WB: 1:500~1:1000

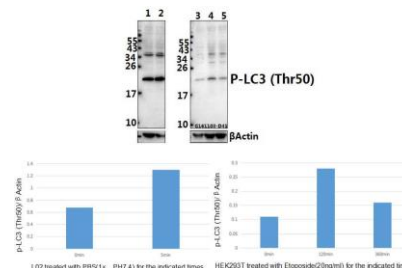
Storage&Stability:

Store at 4 °C short term. Aliquot and store at -20 °C long term. Avoid freeze-thaw cycles.

Specificity:

LC3 (phospho-Thr50) polyclonal antibody detects endogenous levels of LC3A and LC3B protein only when phosphorylated at Thr50. This antibody also recognizes LC3C when phosphorylated at the corresponding residues.

DATA:



Western blot (WB) analysis of LC3 (phospho-Thr50) polyclonal antibody at 1:500 dilution

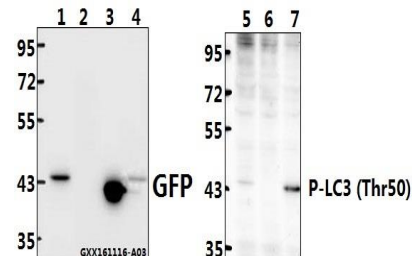
Lane1:L02 whole cell lysate(40ug)

Lane2:L02 treated with PBS(1xPBS,PH7.4) for 1 hour whole cell lysate(40ug)

Lane3:HEK293T whole cell lysate(40ug)

Lane4:HEK293T treated with Etoposide(20ng/ml) for 30 minutes whole cell lysate(40ug)

Lane5:HEK293T treated with Etoposide(20ng/ml) for 6 hours whole cell lysate(40ug)



Western blot (WB) analysis of LC3 (Phospho-Thr50) pAb at 1:500 dilution

Lane1:HEK293T transfected with pEGFP-C3-LC3A whole cell lysate(10ug)

Lane2:HEK293T whole cell lysate(40ug)

Lane3:GFP protein(100ng)

Lane4:HEK293T transfected with pEGFP-C3-LC3B whole cell lysate(10ug)

Lane5:HEK293T transfected with pEGFP-C3-LC3B whole cell lysate(10ug)

Lane6:HEK293T whole cell lysate(40ug)

Lane7:HEK293T transfected with pEGFP-C3-LC3A whole cell lysate(10ug)

Note:

For research use only, not for use in diagnostic procedure.