

LAT (phospho-Y191) polyclonal antibody

Catalog: BCP01028

Host: Rabbit

Reactivity: Human,Mouse,Rat

BackGround:

LAT, a transmembrane adaptor protein expressed in T, NK and mast cells, is an important mediator for T cell receptor (TCR) signaling. Upon TCR engagement, activated Zap-70 phosphorylates LAT at multiple conserved tyrosine residues within SH2 binding motifs, exposing these motifs as the docking sites for downstream signaling targets. The phosphorylation of LAT at Tyr171 and 191 enables the binding of Grb2, Gads/SLP-76, PLCgamma1 and PI3 kinase through their SH2 domain and translocates them to the membrane. This process eventually leads to activation of the corresponding signaling pathways.

Product:

Rabbit IgG, 1mg/ml in PBS with 0.02% sodium azide, 50% glycerol, pH7.2

Molecular Weight:

~ 38 kDa

Swiss-Prot:

O43561

Purification&Purity:

The antibody was affinity-purified from rabbit antiserum by affinity-chromatography using epitope-specific immunogen and the purity is > 95% (by SDS-PAGE).

Applications:

WB: 1:500~1:1000

Storage&Stability:

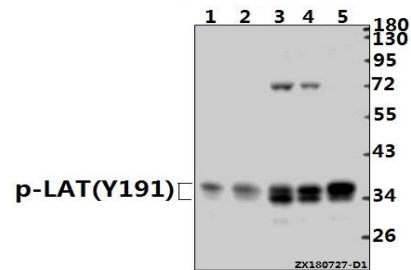
Store at 4 °C short term. Aliquot and store at -20 °C long term. Avoid freeze-thaw cycles.

Specificity:

p-LAT (Y191) polyclonal antibody detects endogenous

levels of human LAT (Isoform Short) only when phosphorylated at Tyr191, and detects LAT (Isoform Long) only when phosphorylated at Tyr220.

DATA:



Western blot (WB) analysis of p-LAT (Y191) pAb at 1:1000 dilution

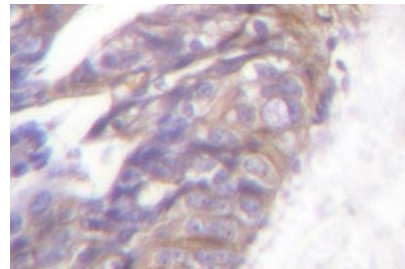
Lane1:H9C2 whole cell lysate(40ug)

Lane2:RAW264.7 whole cell lysate(40ug)

Lane3:K562 whole cell lysate(20ug)

Lane4:Myla2059 whole cell lysate(20ug)

Lane5:HuT78 whole cell lysate(20ug)



Note:

For research use only, not for use in diagnostic procedure.