

LAT (L185) polyclonal antibody

Catalog: BCP01027

Host: Rabbit

Reactivity: Human,Mouse,Rat

BackGround:

LAT, a transmembrane adaptor protein expressed in T, NK and mast cells, is an important mediator for T cell receptor (TCR) signaling. Upon TCR engagement, activated Zap-70 phosphorylates LAT at multiple conserved tyrosine residues within SH2 binding motifs, exposing these motifs as the docking sites for downstream signaling targets. The phosphorylation of LAT at Tyr171 and 191 enables the binding of Grb2, Gads/SLP-76, PLCgamma1 and PI3 kinase through their SH2 domain and translocates them to the membrane. This process eventually leads to activation of the corresponding signaling pathways.

Product:

Rabbit IgG, 1mg/ml in PBS with 0.02% sodium azide, 50% glycerol, pH7.2

Molecular Weight:

~ 38 kDa

Swiss-Prot:

O43561

Purification&Purity:

The antibody was affinity-purified from rabbit antiserum by affinity-chromatography using epitope-specific immunogen and the purity is > 95% (by SDS-PAGE).

Applications:

WB: 1:500~1:1000

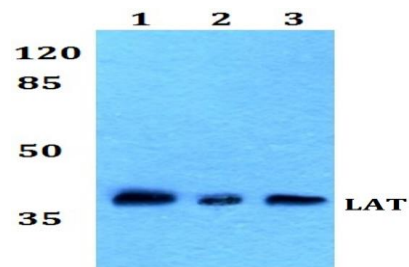
Storage&Stability:

Store at 4 °C short term. Aliquot and store at -20 °C long term. Avoid freeze-thaw cycles.

Specificity:

LAT (L185) polyclonal antibody detects endogenous levels of LAT protein.

DATA:



Western blot (WB) analysis of LAT (L185) pAb at 1:500 dilution

Lane1:K562 whole cell lysate(40ug)

Lane2:THP-1 whole cell lysate(40ug)

Lane3:The Spleen tissue lysate of Mouse(40ug)

Note:

For research use only, not for use in diagnostic procedure.