

Lamin A/C (phospho-S22) polyclonal antibody

Catalog: BCP01020

Host: Rabbit

Reactivity: Human,Rat

BackGround:

Lamin A and C are present in equal amounts in the lamina of mammals. Plays an important role in nuclear assembly, chromatin organization, nuclear membrane and telomere dynamics. Prelamin-A/C can accelerate smooth muscle cell senescence. It acts to disrupt mitosis and induce DNA damage in vascular smooth muscle cells (VSMCs), leading to mitotic failure, genomic instability, and premature senescence.

Product:

Rabbit IgG, 1mg/ml in PBS with 0.02% sodium azide, 50% glycerol, pH7.2

Molecular Weight:

~ 69, 78 kDa

Swiss-Prot:

P02545

Purification&Purity:

The antibody was affinity-purified from rabbit antiserum by affinity-chromatography using epitope-specific immunogen and the purity is > 95% (by SDS-PAGE).

Applications:

WB 1:500 - 1:2000

Storage&Stability:

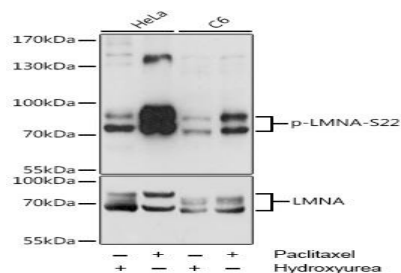
Store at 4 °C short term. Aliquot and store at -20 °C long term. Avoid freeze-thaw cycles.

Specificity:

Lamin A/C (phospho-S22) polyclonal antibody detects endogenous levels of Lamin A/C protein only when

phosphorylated at Ser22.

DATA:

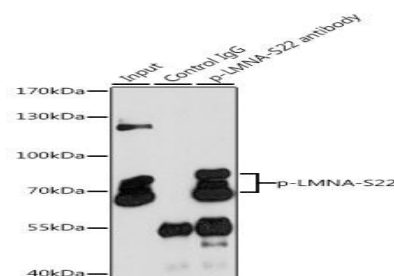


Western blot analysis of extracts of various cell lines, using Phospho-LMNA-S22 antibody.

Lane1:A549 whole cell lysate(40ug)

Lane2:L02 whole cell lysate(40ug)

Lane3:MCF-7 whole cell lysate(40ug)



Immunoprecipitation analysis of 200ug extracts of HeLa cells, using 3 ug Lamin A/C (phospho-S22) polyclonal antibody.

Note:

For research use only, not for use in diagnostic procedure.