

## Kv4.1 (N588) polyclonal antibody

Catalog: BCP01016

Host: Rabbit

Reactivity: Human, Mouse

### Background:

The KV gene family encodes more than 30 genes that comprise the subunits of the K<sup>+</sup> channels, and they vary in their gating and permeation properties, subcellular distribution and expression patterns. Functional KV channels assemble as tetramers consisting of pore-forming  $\alpha$ -subunits (KV $\alpha$ ), which include the KV1, KV2, KV3 and KV4 proteins, and accessory or KV $\beta$  subunits that modify the gating properties of the coexpressed KV $\alpha$  subunits. Differences exist in the patterns of trafficking, biosynthetic processing and surface expression of the major KV1 subunits (KV1.1, KV1.2 and KV1.4) expressed in rat and human brain, suggesting that the individual protein subunits are highly regulated to control for the assembly and formation of functional neuronal channels.

### Product:

Rabbit IgG, 1mg/ml in PBS with 0.02% sodium azide, 50% glycerol, pH7.2

### Molecular Weight:

~ 71 kDa

### Swiss-Prot:

Q9NSA2

### Purification&Purity:

The antibody was affinity-purified from rabbit antiserum by affinity-chromatography using epitope-specific im-

munogen and the purity is > 95% (by SDS-PAGE).

### Applications:

WB: 1:500~1:1000

IHC: 1:50~1:200

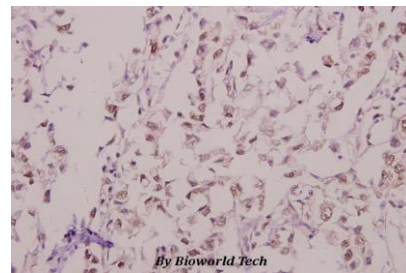
### Storage&Stability:

Store at 4 °C short term. Aliquot and store at -20 °C long term. Avoid freeze-thaw cycles.

### Specificity:

Kv4.1 (N588) polyclonal antibody detects endogenous levels of Kv4.1 protein.

### DATA:



Immunohistochemistry (IHC) analyzes of Kv4.1 (N588) pAb in paraffin-embedded human breast carcinoma tissue at 1:50.

### Note:

For research use only, not for use in diagnostic procedure.