

## Kv1.1 polyclonal antibody

Catalog: BCP01014

Host: Rabbit

Reactivity: Human,Mouse,Rat

### BackGround:

Voltage-gated K<sup>+</sup> channels in the plasma membrane control the repolarization and the frequency of action potentials in neurons, muscles, and other excitable cells. The KV gene family encodes more than 30 genes that comprise the subunits of the K<sup>+</sup> channels, and they vary in their gating and permeation properties, subcellular distribution, and expression patterns. Differences exist in the patterns of trafficking, biosynthetic processing and surface expression of the major KV1 subunits (KV1.1, KV1.2, KV1.4, KV1.5 and KV1.6) expressed in rat and human brain, suggesting that the individual protein subunits are highly regulated to control for the assembly and formation of functional neuronal channels.

### Product:

Rabbit IgG, 1mg/ml in PBS with 0.02% sodium azide, 50% glycerol, pH7.2

### Molecular Weight:

~ 57 kDa

### Swiss-Prot:

Q09470

### Purification&Purity:

The antibody was affinity-purified from rabbit antiserum by affinity-chromatography using epitope-specific immunogen and the purity is > 95% (by SDS-PAGE).

### Applications:

WB: 1:500~1:1000

ICC: 1:50~1:200

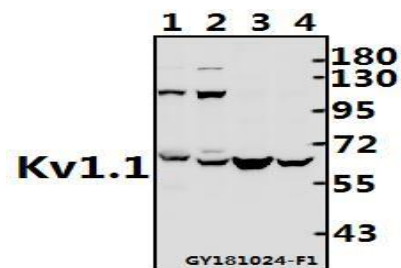
### Storage&Stability:

Store at 4 °C short term. Aliquot and store at -20 °C long term. Avoid freeze-thaw cycles.

### Specificity:

Kv1.1 polyclonal antibody detects endogenous levels of Kv1.1 protein.

### DATA:



Western blot (WB) analysis of Kv1.1 pAb at 1:500 dilution

Lane1:The Brain tissue lysate of Mouse(40ug)

Lane2:The Brain tissue lysate of Rat(40ug)

Lane3:A2780 whole cell lysate(40ug)

Lane4:L02 whole cell lysate(40ug)

### Note:

For research use only, not for use in diagnostic procedure.