

Ku-70 (S1) polyclonal antibody

Catalog: BCP01013

Host: Rabbit

Reactivity: Human,Mouse,Rat

BackGround:

The Ku protein is localized in the nucleus and is composed of subunits referred to as Ku-70 (or p70) and Ku-86 (or p86), which is also known by the synonym Ku-80 (or p80). Ku was first described as an autoantigen to which antibodies were produced in a patient with scleroderma-polymyositis overlap syndrome, and was later found in the sera of patients with other rheumatic diseases. Both subunits of the Ku protein have been cloned, and a number of functions have been proposed for Ku, including cell signaling, DNA replication and transcriptional activation.

Product:

Rabbit IgG, 1mg/ml in PBS with 0.02% sodium azide, 50% glycerol, pH7.2

Molecular Weight:

~ 70 kDa

Swiss-Prot:

P12956

Purification&Purity:

The antibody was affinity-purified from rabbit antiserum by affinity-chromatography using epitope-specific immunogen and the purity is > 95% (by SDS-PAGE).

Applications:

WB: 1:500~1:1000

IHC: 1:50~1:200

Storage&Stability:

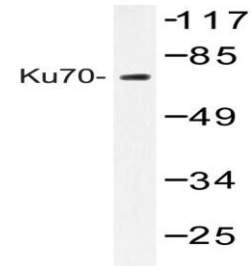
Store at 4 °C short term. Aliquot and store at -20 °C long term. Avoid freeze-thaw cycles.

Specificity:

Ku70 (S1) polyclonal antibody detects endogenous levels

of Ku70 protein.

DATA:



Western blot (WB) analysis of Ku-70 (S1) pAb at 1:500 dilution

Lane1:MCF-7 whole cell lysate(2.5ug)

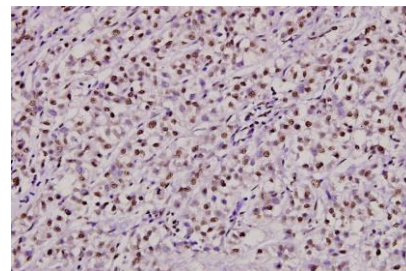
Lane2:HEK293T whole cell lysate(2.5ug)

Lane3:PC12 whole cell lysate(20ug)

Lane4:The Kidney tissue lysate of Mouse(40ug)

Lane5:AML-12 whole cell lysate(40ug)

Lane6:3T3-L1 whole cell lysate(40ug)



Immunohistochemistry (IHC) analyzes of Ku-70 (S1) pAb in paraffin-embedded liver cancer tissue at 1:100.

Note:

For research use only, not for use in diagnostic procedure.