

Ku-70 (phospho-S5) polyclonal antibody

Catalog: BCP01012

Host: Rabbit

Reactivity: Human

BackGround:

The Ku protein is localized in the nucleus and is composed of subunits referred to as Ku-70 (or p70) and Ku-86 (or p86), which is also known by the synonym Ku-80 (or p80). Ku was first described as an autoantigen to which antibodies were produced in a patient with scleroderma-polymyositis overlap syndrome, and was later found in the sera of patients with other rheumatic diseases. Both subunits of the Ku protein have been cloned, and a number of functions have been proposed for Ku, including cell signaling, DNA replication and transcriptional activation.

Product:

Rabbit IgG, 1mg/ml in PBS with 0.02% sodium azide, 50% glycerol, pH7.2

Molecular Weight:

~ 70 kDa

Swiss-Prot:

P12956

Purification&Purity:

The antibody was affinity-purified from rabbit antiserum by affinity-chromatography using epitope-specific immunogen and the purity is > 95% (by SDS-PAGE).

Applications:

WB: 1:500~1:1000

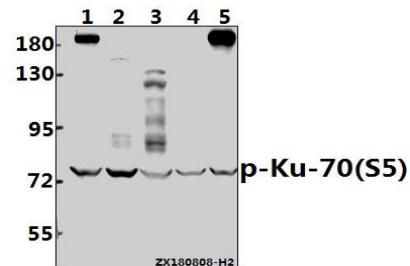
Storage&Stability:

Store at 4 °C short term. Aliquot and store at -20 °C long term. Avoid freeze-thaw cycles.

Specificity:

Ku-70 (phospho-S5) polyclonal antibody detects endogenous levels of Ku-70 protein around the phosphorylation site of S5.

DATA:



Western blot (WB) analysis of p-Ku-70 (S5) pAb at 1:500 dilution

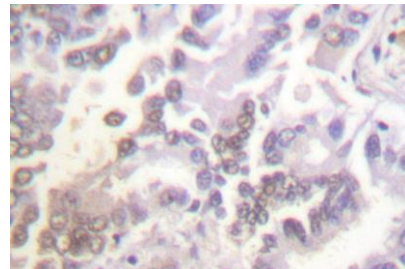
Lane1:A549 whole cell lysate(40ug)

Lane2:A2780 whole cell lysate(40ug)

Lane3:HEK293T whole cell lysate(40ug)

Lane4:A375 whole cell lysate(40ug)

Lane5:MCF-7 whole cell lysate(40ug)



Note:

For research use only, not for use in diagnostic procedure.