

JNK1/2/3 (T178) polyclonal antibody

Catalog: BCP00999

Host: Rabbit

Reactivity: Human,Rat,Mouse

BackGround:

The stress-activated protein kinase/Jun-amino-terminal kinase SAPK/JNK is potently and preferentially activated by a variety of environmental stresses including UV and gamma radiation, ceramides, inflammatory cytokines, and in some instances, growth factors and GPCR agonists. As with the other MAPKs, the core signaling unit is composed of a MAPKKK, typically MEKK1-MEKK4, or by one of the mixed lineage kinases (MLKs), which phosphorylate and activate MKK4/7. Upon activation, MKKs phosphorylate and activate the SAPK/JNK kinase. Stress signals are delivered to this cascade by small GTPases of the Rho family (Rac, Rho, cdc42). Both Rac1 and cdc42 mediate the stimulation of MEKKs and MLKs. Alternatively, MKK4/7 can be activated in a GTPase-independent mechanism via stimulation of a germinal center kinase (GCK) family member. There are three SAPK/JNK genes each of which undergoes alternative splicing, resulting in numerous isoforms. SAPK/JNK, when active as a dimer, can translocate to the nucleus and regulate transcription through its effects on c-Jun, ATF-2, and other transcription factors.

Product:

Rabbit IgG, 1mg/ml in PBS with 0.02% sodium azide, 50% glycerol, pH7.2.

Molecular Weight:

~ 48 kDa

Swiss-Prot:

P45983

Purification&Purity:

The antibody was affinity-purified from rabbit antiserum by affinity-chromatography using epitope-specific immunogen and the purity is > 95% (by SDS-PAGE).

Applications:

WB: 1:500~1:1000

IHC: 1:50~1:200

IF: 1:50~1:200

Storage&Stability:

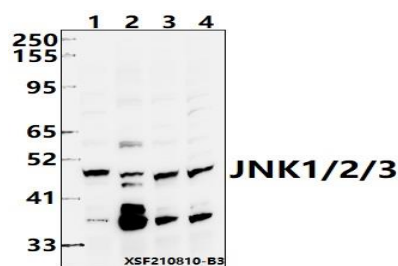
Store at 4 °C short term. Aliquot and store at -20 °C long

term. Avoid freeze-thaw cycles.

Specificity:

JNK1/2/3 (T178) polyclonal antibody detects endogenous levels of JNK1/2/3 protein.

DATA:



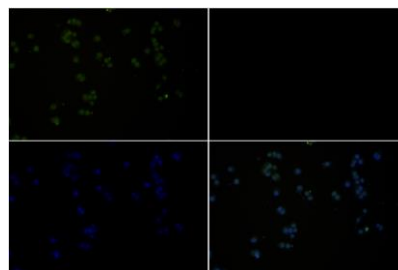
Western blot (WB) analysis of JNK1/2/3 (T178) polyclonal antibody at 1:500 dilution

Lane1:MCF-7 whole cell lysate(40ug)

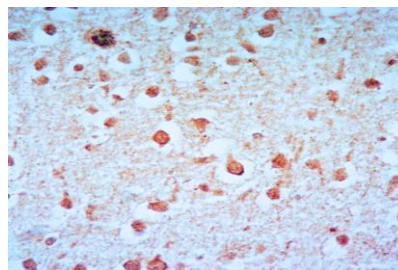
Lane2:HEK293T whole cell lysate(40ug)

Lane3:CT-26 whole cell lysate(40ug)

Lane4:C6 whole cell lysate(40ug)



Immunofluorescence analysis of MCF-7 cells using JNK1/2/3 antibody at dilution of 1:50.



Immunohistochemistry of paraffin-embedded Rat Brain using JNK1/2/3 (T178) antibody at dilution of 1:50.

Note:

For research use only, not for use in diagnostic procedure.

