

## IRS-1 (Ser794) polyclonal antibody

Catalog: BCP00989

Host: Rabbit

Reactivity: Human

### BackGround:

Insulin receptor substrate 1 (IRS-1) is one of the major substrates of the insulin receptor kinase. IRS-1 contains multiple tyrosine phosphorylation motifs that serve as docking sites for SH2-domain containing proteins that mediate the metabolic and growth-promoting functions of insulin. IRS-1 also contains over 30 potential serine/threonine phosphorylation sites. Ser307 of IRS-1 is phosphorylated by JNK and IKK while Ser789 is phosphorylated by SIK-2, a member of the AMPK family. The PKC and mTOR pathways mediate phosphorylation of IRS-1 at Ser612 and Ser636/639, respectively. Phosphorylation of IRS-1 at Ser1101 is mediated by PKC $\theta$  and results in an inhibition of insulin signaling in the cell, suggesting a potential mechanism for insulin resistance in some models of obesity.

### Product:

1 mg/ml in Phosphate buffered saline (PBS) with 0.05% sodium azide, approx. pH 7.3.

### Molecular Weight:

~ 180 kDa

### Swiss-Prot:

P35568

### Purification&Purity:

The antibody was affinity-purified from rabbit antiserum by affinity-chromatography using epitope-specific immunogen and the purity is > 95% (by SDS-PAGE).

### Applications:

WB: 1:2000~1:4000

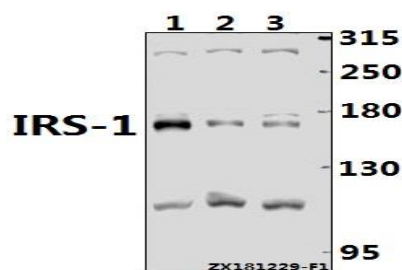
### Storage&Stability:

Store at 4 °C short term. Aliquot and store at -20 °C long term. Avoid freeze-thaw cycles.

### Specificity:

IRS-1 (Ser794) polyclonal antibody detects endogenous levels of IRS-1 protein.

### DATA:



Western blot (WB) analysis of IRS-1 (Ser794) polyclonal antibody at 1:2000 dilution

Lane1:HepG2 whole cell lysate(40ug)

Lane2:A2780 whole cell lysate(40ug)

Lane3:A375 whole cell lysate(40ug)

### Note:

For research use only, not for use in diagnostic procedure.