

**IL7R/CD127 polyclonal antibody**

Catalog: BCP00958

Host: Rabbit

Reactivity: Human, Mouse

**BackGround:**

The IL-7 receptor (IL-7R) is comprised of two protein subunits, CD127/IL-7R $\alpha$  (IL-7R $\alpha$ ) and the common gamma chain (CD132), which is the major signaling component for several cytokines including IL-2, IL-4, IL-9, IL-15, and IL-21. CD127/IL-7R $\alpha$  is a transmembrane protein belonging to the cytokine receptor homology class 1 (CRH1) and is expressed by a wide variety of cells including immature B cells, thymic natural killer cells, bone marrow stromal cells, and T cells. On its own, CD127/IL-7R $\alpha$  functions as a receptor for two cytokine receptor complex signaling cascades: IL-7 and thymic stromal lymphopoietin (TSLP). IL-7 signaling contributes to T cell development and homeostasis whereas TSLP receptor signaling contributes to dendritic cell activation and B cell development. IL-7 signaling is an essential component in regulating the homeostasis of naive and memory T cells as differential expression of CD127/IL-7R $\alpha$  is observed on naive and activated T cells, which occurs following TCR activation. Specifically, CD127/IL-7R $\alpha$  expression is downregulated on activated T cells and the subsequent re-expression of CD127/IL-7R $\alpha$  on these cells is indicative of cells that will differentiate into memory T cells. The A7R34 antibody is widely used to identify CD127/IL-7R $\alpha$  expression on both B and T cells.

**Product:**

Rabbit IgG, 1mg/ml in PBS with 0.02% sodium azide, 50% glycerol, pH7.2.

**Molecular Weight:**

~ 65 kDa

**Swiss-Prot:**

P16871

**Purification&Purity:**

The antibody was affinity-purified from rabbit antiserum by affinity-chromatography using epitope-specific immunogen and the purity is > 95% (by SDS-PAGE).

**Applications:**

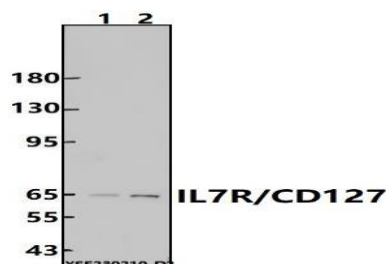
WB: 1:5000~1:10000

**Storage&Stability:**

Store at 4 °C short term. Aliquot and store at -20 °C long term. Avoid freeze-thaw cycles.

**Specificity:**

IL7R/CD127 polyclonal antibody detects endogenous levels of IL7R/CD127 protein.

**DATA:**

Western blot (WB) analysis of IL7R/CD127 polyclonal antibody at 1:5000 dilution

Lane1:BV2 whole cell lysate(30ug)

Lane2:Jurkat whole cell lysate(30ug)

**Note:**

For research use only, not for use in diagnostic procedure.