

IL-2RB/CD122 polyclonal antibody

Catalog: BCP00952

Host: Rabbit

Reactivity: Human,Rat,Mouse

BackGround:

Interleukin-2 (IL-2) is a T cell stimulatory cytokine best known for inducing T cell proliferation and NK cell proliferation and activation. IL-2 also promotes peripheral development of regulatory T cells (Tregs). Conversely, IL-2 is involved in the activation-induced cell death (AICD) that is observed post T cell expansion by increasing levels of Fas on CD4+ T cells. The effects of IL-2 are mediated through a trimeric receptor complex consisting of IL-2R α , IL-2R β , and the common gamma chain, γ c. IL-2R α binds exclusively to IL-2 with low affinity and increases the binding affinity of the whole receptor complex including IL-2R β and γ c subunits. IL-15 also binds to IL-2R β . γ c is used by other cytokines, including IL-4, IL-7, IL-9, IL-15, and IL-21. Binding of IL-2 initiates signaling cascades involving Jak1, Jak3, Stat5, and the PI3K/Akt pathways. IL-2R β , also known as CD122, is a type I transmembrane protein that is expressed by natural killer cells and certain subsets of T cells in the periphery. IL-2R β surface expression is up-regulated following antigen-induced activation. A heteromeric complex composed of IL-2R β and γ c forms the intermediate affinity IL-2 receptor whereas a complex comprised of all three chains forms the high affinity receptor. Signaling through IL-2R β is mediated by Jak1, which phosphorylates numerous tyrosine residues in the cytoplasmic tail to promote the recruitment of the adaptor Shc to IL-2R β and enhance IL-2 receptor signaling.

Product:

Rabbit IgG, 1mg/ml in PBS with 0.02% sodium azide, 50% glycerol, pH7.2.

Molecular Weight:

~ 64kDa

Swiss-Prot:

P14784

Purification&Purity:

The antibody was affinity-purified from rabbit antiserum by affinity-chromatography using epitope-specific immunogen and the purity is > 95% (by SDS-PAGE).

Applications:

WB: 1:2000~1:5000

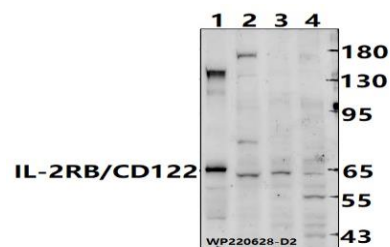
Storage&Stability:

Store at 4 °C short term. Aliquot and store at -20 °C long term. Avoid freeze-thaw cycles.

Specificity:

IL-2RB/CD122 polyclonal antibody detects endogenous levels of IL-2RB/CD122 protein.

DATA:



Western blot (WB) analysis of IL-2RB/CD122 polyclonal antibody at 1:2000 dilution

Lane1:The Liver tissue lysate of Mouse(30ug)

Lane2:PC12 whole cell lysate(30ug)

Lane3:HCT116 whole cell lysate(30ug)

Lane4:H1792 whole cell lysate(30ug)

:

Note:

For research use only, not for use in diagnostic procedure.