

## IL-12B (V277) polyclonal antibody

Catalog: BCP00947

Host: Rabbit

Reactivity: Human,Mouse,Rat

### BackGround:

IL-12 is secreted by macrophages and human B-lymphoblastoid cells in response to antigenic stimulation. This IL is responsible for the differentiation of naive CD4+ T cells into type 1 helper T cells that produce interferon- $\gamma$  (IFN- $\gamma$ ). It also activates production of tumor necrosis factor  $\alpha$  (TNF $\alpha$ ) from T and natural killer (NK) cells, and it inhibits IL-4 mediated suppression of IFN- $\gamma$ . IL-12 also has anti-angiogenic activity since the production of IFN- $\gamma$  increases the production of inducible protein-10 (IP-10). IL-12 p40 represents a subunit of IL-12 that is induced by several pathogens. IL-12 p70 is a subunit of IL-12 that is controlled through both the p35 and p40 genes in a cell type-specific fashion.

### Product:

Rabbit IgG, 1mg/ml in PBS with 0.02% sodium azide, 50% glycerol, pH7.2

### Molecular Weight:

~ 37 kDa

### Swiss-Prot:

P29460

### Purification&Purity:

The antibody was affinity-purified from rabbit antiserum by affinity-chromatography using epitope-specific immunogen and the purity is > 95% (by SDS-PAGE).

### Applications:

WB: 1:500~1:1000

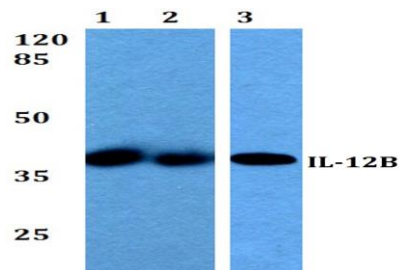
### Storage&Stability:

Store at 4 °C short term. Aliquot and store at -20 °C long term. Avoid freeze-thaw cycles.

### Specificity:

IL-12B (V277) polyclonal antibody detects endogenous levels of IL-12B protein.

### DATA:



Western blot (WB) analysis of IL-12B (V277) polyclonal antibody at 1:500 dilution

Lane1:Hela whole cell lysate(40ug)

Lane2:K562 whole cell lysate(40ug)

Lane3:CT26 whole cell lysate(40ug)

Lane4:PC12 whole cell lysate(40ug)

### Note:

For research use only, not for use in diagnostic procedure.