

## IK/RED (P555) polyclonal antibody

Catalog: BCP00935

Host: Rabbit

Reactivity: Human,Mouse,Rat

### BackGround:

Protein Red, Cytokine IK. Function: May bind to chromatin. Tissue specificity: Ubiquitous. Sequence similarities: Belongs to the RED family. Developmental stage: Expressed at similar levels in fetal and adult tissues. Post-translational modifications: Phosphorylated upon DNA damage, probably by ATM or ATR. Cellular localization: Nucleus.

### Product:

Rabbit IgG, 1mg/ml in PBS with 0.02% sodium azide, 50% glycerol, pH7.2

### Molecular Weight:

~ 66 kDa

### Swiss-Prot:

Q13123

### Purification&Purity:

The antibody was affinity-purified from rabbit antiserum by affinity-chromatography using epitope-specific immunogen and the purity is > 95% (by SDS-PAGE).

### Applications:

WB: 1:500~1:1000

IHC: 1:50~1:200

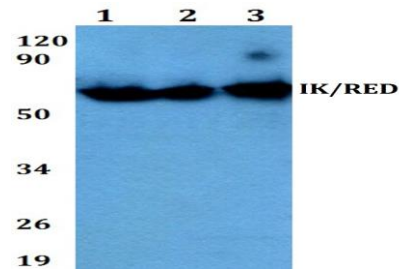
### Storage&Stability:

Store at 4 °C short term. Aliquot and store at -20 °C long term. Avoid freeze-thaw cycles.

### Specificity:

IK (P555) polyclonal antibody detects endogenous levels of IK protein.

### DATA:



Western blot (WB) analysis of IK/RED (P555) pAb at 1:500 dilution

Lane1:CT26 whole cell lysate(40ug)

Lane2:The Brain tissue lysate of Rat(40ug)

Lane3:Hela whole cell lysate(40ug)

Lane4:MCF-7 whole cell lysate(40ug)

Lane5:H1792 whole cell lysate(40ug)

Immunohistochemistry (IHC) analyzes of IK (P555) pAb in paraffin-embedded human breast cancer tissue.

### Note:

For research use only, not for use in diagnostic procedure.