

IGLON5 polyclonal antibody

Catalog: BCP00934

Host: Rabbit

Reactivity: Human,Rat,Mouse

BackGround:

Antibodies against IGLON5, a neuronal adhesion protein of unknown function, are markers of a novel neurological disorder termed anti-IGLON5 syndrome.

Product:

Rabbit IgG, 1mg/ml in PBS with 0.02% sodium azide, 50% glycerol, pH7.2

Molecular Weight:

~ 37 kDa

Swiss-Prot:

A6NGN9

Purification&Purity:

The antibody was affinity-purified from rabbit antiserum by affinity-chromatography using epitope-specific immunogen and the purity is > 95% (by SDS-PAGE).

Applications:

WB: 1:1000~1:2000

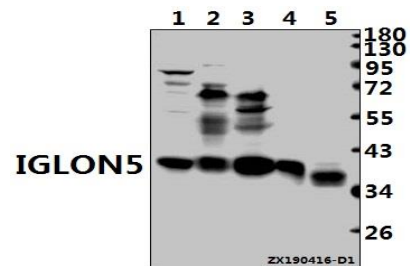
Storage&Stability:

Store at 4 °C short term. Aliquot and store at -20 °C long term. Avoid freeze-thaw cycles.

Specificity:

IGLON5 polyclonal antibody detects endogenous levels of IGLON5 protein.

DATA:



Western blot (WB) analysis of IGLON5 polyclonal antibody at 1:1000 dilution

Lane1:BV2 whole cell lysate(40ug)

Lane2:A2780 whole cell lysate(40ug)

Lane3:EC9706 whole cell lysate(40ug)

Lane4:C6 whole cell lysate(20ug)

Lane5:U-87MG whole cell lysate(30ug)

Note:

For research use only, not for use in diagnostic procedure.