

IGFBP-3 (Phospho-Ser183) polyclonal antibody

Catalog: BCP00932

Host: Rabbit

Reactivity: Human,Mouse,Rat

BackGround:

Insulin-like growth factor (IGF) signaling plays a major role in regulating the proliferation and metabolism of normal and malignant cells. Insulin-like growth factor-binding proteins (IGFBPs) play an integral role in modifying IGF actions in a wide variety of cell types. The six IGFBP family members share a high affinity for IGF binding and are structurally related, but are encoded by distinct genes. IGF binding proteins can exert stimulatory or inhibitory effects by controlling IGF availability through high affinity binding of IGF at the carboxy-terminal domain. IGFBP3 is the most abundant serum IGF binding protein and the main mediator for IGF-I bioactivities. IGFBP3 also binds IGF-II, insulin, and other cellular and extracellular components to regulate cell growth, development, and apoptosis through both IGF-dependent and IGF-independent mechanisms. Research studies describe correlations between increased IGF-I levels and reduced levels of IGFBP3 with increased risks of developing cancer, including breast, colon, lung, and prostate cancer.

Product:

Rabbit IgG, 1mg/ml in PBS with 0.02% sodium azide, 50% glycerol, pH7.2

Molecular Weight:

~ 40 kDa

Swiss-Prot:

P17936

Purification&Purity:

The antibody was affinity-purified from rabbit antiserum by affinity-chromatography using epitope-specific im-

munogen and the purity is > 95% (by SDS-PAGE).

Applications:

WB: 1:500~1:1000

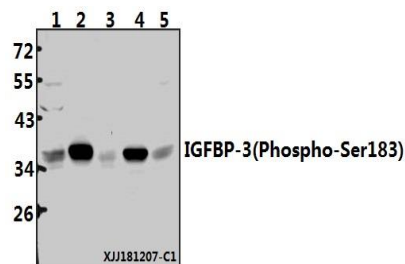
Storage&Stability:

Store at 4 °C short term. Aliquot and store at -20 °C long term. Avoid freeze-thaw cycles.

Specificity:

IGFBP-3(Phospho-Ser183) polyclonal antibody detects endogenous levels of IGFBP-3 protein only when phosphorylated at Ser183.

DATA:



Western blot (WB) analysis of IGFBP-3(Phospho-Ser183) polyclonal antibody at 1:500 dilution

Lane1:HCT116 whole cell lysate(40ug)

Lane2:U-87MG whole cell lysate(40ug)

Lane3:SK-OVCAR3 whole cell lysate(40ug)

Lane4:C6 whole cell lysate(40ug)

Lane5:BV2 whole cell lysate(40ug)

Note:

For research use only, not for use in diagnostic procedure.