

IGF-1R (G1155) polyclonal antibody

Catalog: BCP00931

Host: Rabbit

Reactivity: Human, Mouse, Rat

BackGround:

Insulin-like growth factor-I receptor (IGF-IR) is an RTK that stimulates growth in many different cell types, blocks apoptosis, acts as an intermediate of many growth hormone responses and may stimulate the growth of some types of cancer. The IGF-IR cognate ligand insulin-like growth factor-I (IGF-I) promotes association of IGF-IR with Shc, GRB2 and Sos 1, which initiates Ras and ERK kinase cascades, thereby modifying transcription factor activity, such as activation of the Elk transcription factors. The modular phosphotyrosine binding (PTB) domains of insulin receptor substrate (IRS)-1 and -2 can associate with active IGF-IR and initiate phosphatidylinositol 3-kinase-dependent downstream signals.

Product:

Rabbit IgG, 1mg/ml in PBS with 0.02% sodium azide, 50% glycerol, pH7.2

Molecular Weight:

~ 95,155 kDa

Swiss-Prot:

P08069/P06213

Purification&Purity:

The antibody was affinity-purified from rabbit antiserum by affinity-chromatography using epitope-specific immunogen and the purity is > 95% (by SDS-PAGE).

Applications:

WB: 1:500~1:1000

IHC: 1:50~1:200

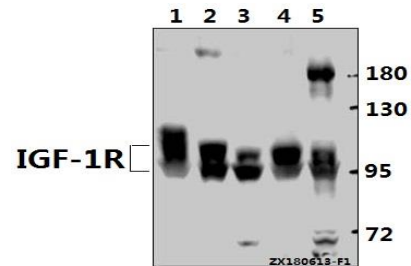
Storage&Stability:

Store at 4 °C short term. Aliquot and store at -20 °C long term. Avoid freeze-thaw cycles.

Specificity:

IGF-1R (G1155) polyclonal antibody detects endogenous levels of IGF-1R protein. This antibody may cross-reacts with insulin receptor protein.

DATA:



Western blot (WB) analysis of IGF-1R (G1155) pAb at 1:500 dilution

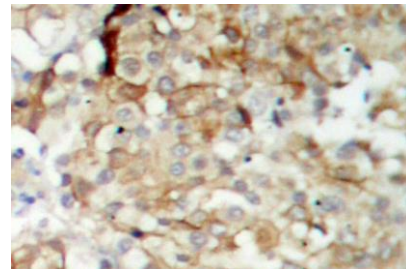
Lane1: AML-12 whole cell lysate(40ug)

Lane2: C6 whole cell lysate(40ug)

Lane3: HepG2 whole cell lysate(40ug)

Lane4: Panc1 whole cell lysate(40ug)

Lane5: HEK293T whole cell lysate(40ug)



Immunohistochemistry (IHC) analyzes of IGF-1R (G1155) antibody in paraffin-embedded human breast carcinoma tissue.

Note:

For research use only, not for use in diagnostic procedure.