

IgA (Y276) polyclonal antibody

Catalog: BCP00930

Host: Rabbit

Reactivity: Human, Mouse

Background:

Human IgA (immunoglobulin A) is a glycosylated protein of 160 kDa and is produced as a monomer or as a J chain linked dimer. Monomeric IgA constitutes 5-15 % of the serum immunoglobulins whereas dimeric IgA is localized to mucosa surfaces such as saliva, gastrointestinal secretion, bronchial fluids and milk. Mucosal IgA plays a major role in host defence by neutralising infectious agents at mucosal surfaces. The production is usually local and antigen specific IgA producing B cells can be found in regions under the lamina propria where they mature into dimeric IgA producing plasma cells. IgA deficiency is the most common immunodeficiency that may affect both serum and mucosal produced IgA.

Product:

Rabbit IgG, 1mg/ml in PBS with 0.02% sodium azide, 50% glycerol, pH7.2

Molecular Weight:

~ 38 kDa

Swiss-Prot:

P01876/P01877

Purification&Purity:

The antibody was affinity-purified from rabbit antiserum by affinity-chromatography using epitope-specific immunogen and the purity is > 95% (by SDS-PAGE).

Applications:

WB: 1:500~1:1000

IHC: 1:50~1:200

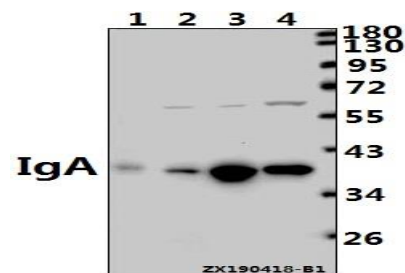
Storage&Stability:

Store at 4 °C short term. Aliquot and store at -20 °C long term. Avoid freeze-thaw cycles.

Specificity:

IgA (Y276) polyclonal antibody detects endogenous levels of IgA protein.

DATA:



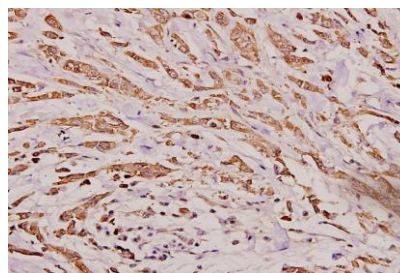
Western blot (WB) analysis of IGHA1/IGHA2 pAb at 1:1000 dilution

Lane1: AML-12 whole cell lysate(40ug)

Lane2: SGC7901 whole cell lysate(40ug)

Lane3: A549 whole cell lysate(40ug)

Lane4: HepG2 whole cell lysate(40ug)



Immunohistochemistry (IHC) analyzes of IgA (Y276) pAb in paraffin-embedded human breast carcinoma tissue at 1:100.

Note:

For research use only, not for use in diagnostic procedure.