

## IFIH1 polyclonal antibody

Catalog: BCP00928

Host: Rabbit

Reactivity: Human, Mouse

### Background:

IFIH1 (interferon induced with helicase C domain 1), also known as MDA5 (melanoma differentiation-associated protein 5), is one of a family of intracellular proteins known to recognise viral RNA and mediate the innate immune response. IFIH1 is causal in type 1 diabetes based on the protective associations of four rare variants, where the derived alleles are predicted to reduce gene expression or function.

### Product:

Rabbit IgG, 1mg/ml in PBS with 0.02% sodium azide, 50% glycerol, pH7.2

### Molecular Weight:

~ 135 kDa

### Swiss-Prot:

Q9BYX4

### Purification&Purity:

The antibody was affinity-purified from rabbit antiserum by affinity-chromatography using epitope-specific immunogen and the purity is > 95% (by SDS-PAGE).

### Applications:

WB: 1:500~1:1000

### Storage&Stability:

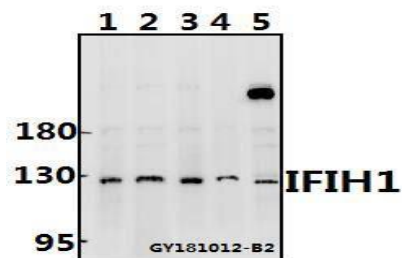
Store at 4 °C short term. Aliquot and store at -20 °C long

term. Avoid freeze-thaw cycles.

### Specificity:

IFIH1 polyclonal antibody detects endogenous levels of IFIH1 protein.

### DATA:



Western blot (WB) analysis of IFIH1 polyclonal antibody at 1:500 dilution

Lane1:DLD whole cell lysate(40ug)

Lane2:Panc1 whole cell lysate(40ug)

Lane3:HCT116 whole cell lysate(40ug)

Lane4:PC3 whole cell lysate(40ug)

Lane5:CT26 whole cell lysate(40ug)

### Note:

For research use only, not for use in diagnostic procedure.