

HSP70 (Y41) polyclonal antibody

Catalog: BCP00918

Host: Rabbit

Reactivity: Human,Mouse,Rat

BackGround:

The HSP 70 family is composed of four highly conserved proteins: HSP 70, HSC 70, GRP 75 and GRP 78. These proteins serve a variety of roles: they act as molecular chaperones facilitating the assembly of multi-protein complexes, participate in the translocation of polypeptides across cell membranes and to the nucleus and aid in the proper folding of nascent polypeptide chains. All members of the family, except HSP 70, are constitutively expressed in primate cells. HSP 70 expression is strongly induced in response to heat stress. HSP 70 and HSC 70 play key roles in the cytosolic endoplasmic reticulum and mitochondrial import machinery and are found in both the cytosol and nucleus of mammalian cells. Both HSP 70 and HSC 70 are involved in the chaperoning of nascent polypeptide chains and in protecting cells against the accumulation of improperly folded proteins.

Product:

Rabbit IgG, 1mg/ml in PBS with 0.02% sodium azide, 50% glycerol, pH7.2

Molecular Weight:

~ 70 kDa

Swiss-Prot:

P08107

Purification&Purity:

The antibody was affinity-purified from rabbit antiserum by affinity-chromatography using epitope-specific immunogen and the purity is > 95% (by SDS-PAGE).

Applications:

WB: 1:500~1:1000

IHC: 1:50~1:200

Storage&Stability:

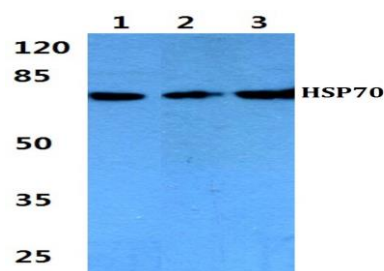
Store at 4 °C short term. Aliquot and store at -20 °C long

term. Avoid freeze-thaw cycles.

Specificity:

HSP70 (Y41) polyclonal antibody detects endogenous levels of HSP 70 protein.

DATA:



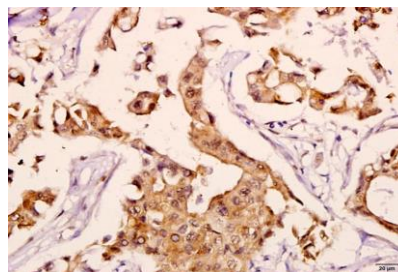
Western blot (WB) analysis of HSP70 (Y41) polyclonal antibody at 1:500 dilution

Lane1:MCF-7 whole cell lysate(40ug)

Lane2:NIH-3T3 whole cell lysate(40ug)

Lane3:PC12 whole cell lysate(40ug)

Lane4:HEK293T whole cell lysate(40ug)



Immunohistochemistry (IHC) analyzes of HSP70 (Y41) pAb in paraffin-embedded human breast carcinoma tissue at 1:50.

Note:

For research use only, not for use in diagnostic procedure.