

HSP27 polyclonal antibody

Catalog: BCP00914

Host: Rabbit

Reactivity: Human, Mouse, Rat

BackGround:

Hsp27, also referred to as the Estrogen-Regulated 24K protein and HSP28, is one of several small heat shock proteins (HSP) produced by all organisms studied. Hsp27 synthesis is induced by elevated temperature, as well as estrogen in hormone responsive cells. This protein is involved in stress resistance and actin organization. Interestingly, human HSP27 also shares greater than 50% homology with low molecular weight Drosophila HSP's and mammalian a-crystalline lens protein. Because of the estrogen-responsive nature of Hsp27, this protein has been studied extensively in human estrogen-responsive tissues such as cervix, endometrium and breast tissue. This work has led to the suggestion that Hsp27 may be a useful marker in classifying various hormone sensitive tumors.

Product:

Rabbit IgG, 1mg/ml in PBS with 0.02% sodium azide, 50% glycerol, pH7.2

Molecular Weight:

~ 27 kDa

Swiss-Prot:

P04792

Purification&Purity:

The antibody was affinity-purified from rabbit antiserum by affinity-chromatography using epitope-specific immunogen and the purity is > 95% (by SDS-PAGE).

Applications:

WB: 1:500~1:1000

IHC: 1:50~1:200

IP: 1:10~1:100

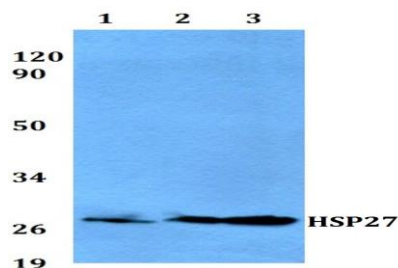
Storage&Stability:

Store at 4 °C short term. Aliquot and store at -20 °C long term. Avoid freeze-thaw cycles.

Specificity:

HSP27 polyclonal antibody detects endogenous levels of HSP27 protein.

DATA:

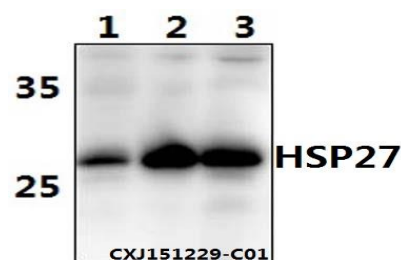


Western blot (WB) analysis of HSP27 polyclonal antibody at 1:500 dilution

Lane1:Hela whole cell lysate(40ug)

Lane2:H9C2 whole cell lysate(40ug)

Lane3:PC12 whole cell lysate(40ug)

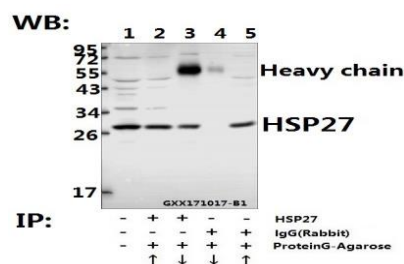


Western blot (WB) analysis of HSP27 (S78) pAb at 1:500 dilution

Lane1:Hela whole cell lysate(40ug)

Lane2:H9C2 whole cell lysate(40ug)

Lane3:PC12 whole cell lysate(40ug)



Immunoprecipitation of L02 whole cell lysate using HSP27 pAb (Sepharose Bead Conjugate) #BD0047 (lane 2 and lane 3) and Nonspecific IgG Control (Sepharose Bead Conjugate)#BD0047 (lane 4 and lane 5) .Lane 1 is 20% input. The western blot was probed using HSP27 pAb. "↑" (supernatant) ; "↓" (deposition)

Note:

For research use only, not for use in diagnostic procedure.