

HSP27 (phospho-S15) polyclonal antibody

Catalog: BCP00909

Host: Rabbit

Reactivity: Human, Mouse, Rat

BackGround:

Hsp27, also referred to as the Estrogen-Regulated 24K protein and HSP28, is one of several small heat shock proteins (HSP) produced by all organisms studied. Hsp27 synthesis is induced by elevated temperature, as well as estrogen in hormone responsive cells. This protein is involved in stress resistance and actin organization. Interestingly, human HSP27 also shares greater than 50% homology with low molecular weight Drosophila HSP's and mammalian a-crystalline lens protein. Because of the estrogen-responsive nature of Hsp27, this protein has been studied extensively in human estrogen-responsive tissues such as cervix, endometrium and breast tissue. This work has led to the suggestion that Hsp27 may be a useful marker in classifying various hormone sensitive tumors.

Product:

Rabbit IgG, 1mg/ml in PBS with 0.02% sodium azide, 50% glycerol, pH7.2

Molecular Weight:

~ 27 kDa

Swiss-Prot:

P04792

Purification&Purity:

The antibody was affinity-purified from rabbit antiserum by affinity-chromatography using epitope-specific immunogen and the purity is > 95% (by SDS-PAGE).

Applications:

WB: 1:500~1:1000

IHC: 1:50~1:200

IP: 1:10~1:100

Storage&Stability:

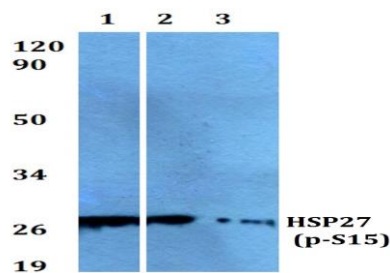
Store at 4 °C short term. Aliquot and store at -20 °C long term. Avoid freeze-thaw cycles.

Specificity:

HSP27 (phospho-S15) polyclonal antibody detects en-

dogenous levels of HSP27 protein only when phosphorylated at Ser15

DATA:



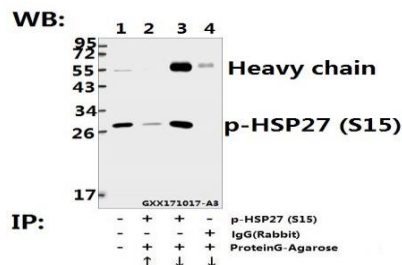
Western blot (WB) analysis of HSP27 (phospho-S15) pAb at 1:500 dilution

Lane1:L02 whole cell lysate

Lane2:SGC7901 whole cell lysate

Lane3:HEK293T transfected with pCDNA3.1-Flag-HSP27 whole cell lysate

Lane4:HEK293T whole cell lysate



Immunoprecipitation of L02 whole cell lysate using HSP27 (phospho-S15) pAb (Sepharose Bead Conjugate) #BD0047(lane 2 and lane 3) and Nonspecific IgG Control (Sepharose Bead Conjugate)#BD0047 (lane 4) .Lane 1 is 20% input. The western blot was probed using HSP27 (phospho-S15) pAb. “↑” (supernatant) ; “↓” (deposition)

Note:

For research use only, not for use in diagnostic procedure.