

Hexim1 (Q215) polyclonal antibody

Catalog: BCP00867

Host: Rabbit

Reactivity: Human, Mouse, Rat

BackGround:

Hexamethylene bis-acetamide inducible 1 (HEXIM1) and Hexamethylene bis-acetamide inducible 2 (HEXIM2) comprise a family of proteins which inhibit positive transcription elongation factor b (P-TEFb) through association with 7SK. P-TEFb is composed of a catalytic subunit, Cdk9, and either Cyclin T1 or T2 as a regulatory subunit. This complex regulates eukaryotic gene expression at the level of elongation. The C-terminal domains of HEXIM proteins interact directly with each other. Via these domains, HEXIM1 and HEXIM2 form stable homo- and hetero-oligomers, which may aid in the formation of the 7SK small nuclear ribonucleic acid particle. Despite their similar functions, HEXIM1 and HEXIM2 exhibit distinct expression patterns in various established cell lines and human tissues.

Product:

Rabbit IgG, 1mg/ml in PBS with 0.02% sodium azide, 50% glycerol, pH7.2

Molecular Weight:

~ 41 kDa

Swiss-Prot:

O94992

Purification&Purity:

The antibody was affinity-purified from rabbit antiserum by affinity-chromatography using epitope-specific immunogen and the purity is > 95% (by SDS-PAGE).

Applications:

WB: 1:500~1:1000

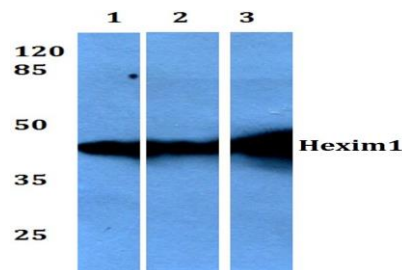
IHC: 1:50~1:200

Storage&Stability:

Store at 4 °C short term. Aliquot and store at -20 °C long term. Avoid freeze-thaw cycles.

Specificity:

Hexim1 (Q215) polyclonal antibody detects endogenous levels of Hexim1 protein.

DATA:

Western blot (WB) analysis of Hexim1 (Q215) pAb at 1:1000 dilution

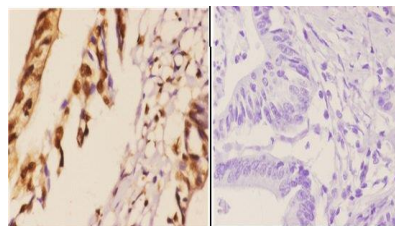
Lane1:A549 whole cell lysate(40ug)

Lane2:HepG2 whole cell lysate(40ug)

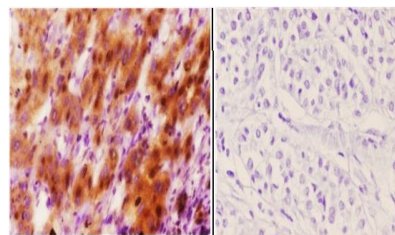
Lane3:MCF-7 whole cell lysate(40ug)

Lane4:AML-12 whole cell lysate(40ug)

Lane5:PMVEC whole cell lysate(40ug)

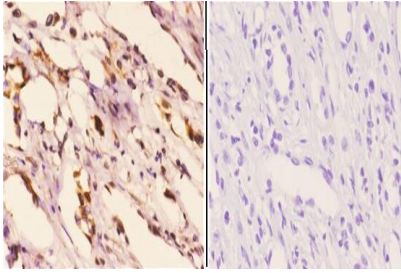


Immunohistochemistry (IHC) analyzes of Hexim1 (Q215) pAb in paraffin-embedded human colon carcinoma tissue at 1:50. showing Cytoplasm and Nucleus staining. Negative control (the right) Using PBS instead of primary antibody, secondary antibody is Goat Anti-Rabbit IgG-biotin followed by avidin-peroxidase.



BS1896
Lot CA36131

Immunohistochemistry (IHC) analyzes of Hexim1 (Q215) pAb in paraffin-embedded human liver carcinoma tissue at 1:50. showing Cytoplasm and Nucleus staining. Negative control (the right) Using PBS instead of primary antibody, secondary antibody is Goat Anti-Rabbit IgG-biotin followed by avidin-peroxidase.



Immunohistochemistry (IHC) analyzes of Hexim1 (Q215) pAb in paraffin-embedded human liver carcinoma tissue at 1:50, showing Cytoplasm and Nucleus staining. Negative control (the right) Using PBS instead of primary antibody, secondary antibody is Goat Anti-Rabbit IgG-biotin followed by avidin-peroxidase.

Note:

For research use only, not for use in diagnostic procedure.