

HDAC1 (E468) polyclonal antibody

Catalog: BCP00858

Host: Rabbit

Reactivity: Human, Mouse, Rat

BackGround:

Acetylation of lysine residues in the amino-terminal tail domain of histone results in an allosteric change in the nucleosomal conformation and an increased accessibility to transcription factors by DNA. Conversely, the deacetylation of histones is associated with transcriptional silencing. Several mammalian proteins have been identified as nuclear histone acetylases, including GCN5, PCAF (for p300/CBP-associated factor), p300/CBP and the TFIID subunit TAF II p250. Mammalian HDAC1 (also designated HD1), HDAC2 (also designated mammalian RPD3) and HDAC3, all of which are related to the yeast transcriptional regulator Rpd3p, have been identified as histone deacetylases.

Product:

Rabbit IgG, 1mg/ml in PBS with 0.02% sodium azide, 50% glycerol, pH7.2

Molecular Weight:

~ 55 kDa

Swiss-Prot:

Q13547

Purification&Purity:

The antibody was affinity-purified from rabbit antiserum by affinity-chromatography using epitope-specific immunogen and the purity is > 95% (by SDS-PAGE).

Applications:

WB: 1:500~1:1000

IHC: 1:50~1:200

IF: 1:50~1:200

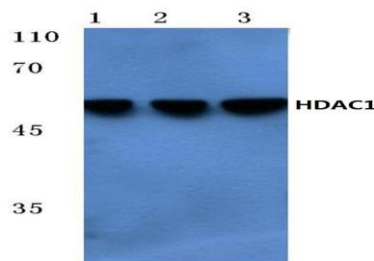
Storage&Stability:

Store at 4 °C short term. Aliquot and store at -20 °C long term. Avoid freeze-thaw cycles.

Specificity:

HDAC1(E468) polyclonal antibody detects endogenous levels of HDAC1 protein.

DATA:



Western blot (WB) analysis of HDAC1 (E468) polyclonal antibody at 1:500 dilution

Lane1:HEK293T whole cell lysate(40µg)

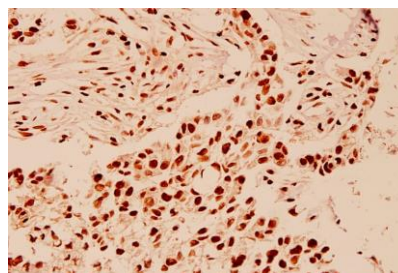
Lane2:Hela whole cell lysate(40µg)

Lane3:The Kidney tissue lysate of Mouse(40µg)

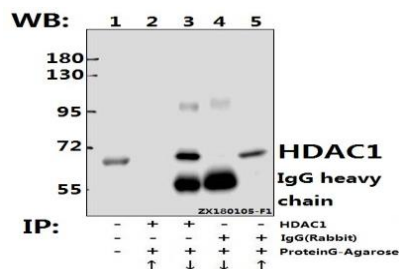
Lane4:The Kidney tissue lysate of Rat(40µg)

Lane5:The Heart tissue lysate of Mouse(40µg)

Lane6:The Heart tissue lysate of Rat(40µg)



Immunohistochemistry (IHC) analyzes of HDAC1 (E468) pAb in paraffin-embedded human breast carcinoma tissue at 1:100.



Immunoprecipitation of L02 cell lysate using HDAC1 (E468) pAb (Sepharose Bead Conjugate) #BD0048(lane 2 and lane 3) and Nonspecific IgG Control (Sepharose Bead Conjugate)#BD0048 (lane 4 and lane 5). Lane 1 is 30% input. The western blot was probed using HDAC1 (E468) pAb #BS1160. “↑” (supernatant) ; “↓” (deposition)

Note:

For research use only, not for use in diagnostic procedure.