

HBO1 (S167) polyclonal antibody

Catalog: BCP00855

Host: Rabbit

Reactivity: Human, Mouse, Rat

BackGround:

KAT7 / Hbo1 is a member of the MYST histone acetyltransferase family which acetylates both histone H3 and H4 and is involved in the regulation of replication. The initiation of DNA replication is tightly regulated in eukaryotic cells to ensure that the genome is precisely duplicated once per cell cycle. This is accomplished by controlling the pre-replicative complex. KAT7 acts as a positive regulatory factor for pre-RC assembly and thus controls DNA replication.

Product:

Rabbit IgG, 1mg/ml in PBS with 0.02% sodium azide, 50% glycerol, pH7.2

Molecular Weight:

~ 71 kDa

Swiss-Prot:

O95251

Purification&Purity:

The antibody was affinity-purified from rabbit antiserum by affinity-chromatography using epitope-specific immunogen and the purity is > 95% (by SDS-PAGE).

Applications:

WB: 1:500~1:1000

IF: 1:50~1:200

IP: 1:10~1:100

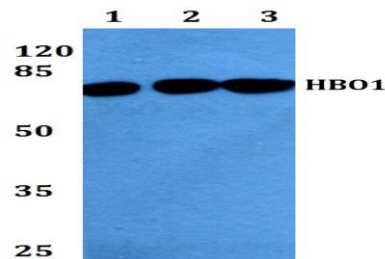
Storage&Stability:

Store at 4 °C short term. Aliquot and store at -20 °C long term. Avoid freeze-thaw cycles.

Specificity:

HBO1 (S167) polyclonal antibody detects endogenous levels of HBO1 protein.

DATA:



Western blot (WB) analysis of HBO1 (S167) polyclonal antibody at 1:500 dilution

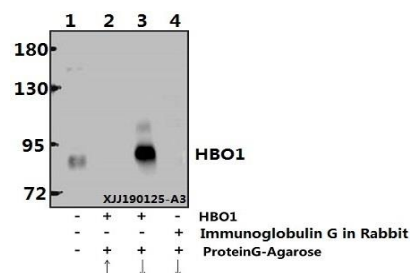
Lane1:HepG2 whole cell lysate(40ug)

Lane2:A549 whole cell lysate(40ug)

Lane3:HEK293T whole cell lysate(40ug)

Lane4:PC12 whole cell lysate(40ug)

Lane5:AML-12 whole cell lysate(40ug)



Immunoprecipitation of HEK293T cell lysate using HBO1 (S167) polyclonal antibody (Sepharose Bead Conjugate) #BD0048(lane 2 and lane 3) and Nonspecific IgG Control (Sepharose Bead Conjugate) #BD0048 (lane 4).Lane 1 is 30% input.The western blot was probed using HBO1 (S167). “ ↑ ” (supernatant) ; “ ↓ ” (deposition)

Note:

For research use only, not for use in diagnostic procedure.