

GSTP1 polyclonal antibody

Catalog: BCP00851

Host: Rabbit

Reactivity: Human,Mouse,Rat

BackGround:

Glutathione S-transferases (GSTs) are a family of enzymes that play an important role in detoxification by catalyzing the conjugation of many hydrophobic and electrophilic compounds with reduced glutathione. Based on their biochemical, immunologic, and structural properties, the soluble GSTs are categorized into 4 main classes: alpha, mu, pi, and theta. This GST family member is a polymorphic gene encoding active, functionally different GSTP1 variant proteins that are thought to function in xenobiotic metabolism and play a role in susceptibility to cancer, and other diseases.

Product:

Rabbit IgG, 1mg/ml in PBS with 0.02% sodium azide, 50% glycerol, pH7.2

Molecular Weight:

~ 26 kDa

Swiss-Prot:

P09211

Purification&Purity:

The antibody was affinity-purified from rabbit antiserum by affinity-chromatography using epitope-specific immunogen and the purity is > 95% (by SDS-PAGE).

Applications:

WB 1:500 - 1:2000 IHC 1:50 - 1:200 IF 1:50 - 1:200

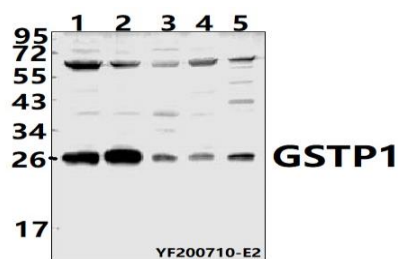
Storage&Stability:

Store at 4 °C short term. Aliquot and store at -20 °C long term. Avoid freeze-thaw cycles.

Specificity:

GSTP1 polyclonal antibody detects endogenous levels of GSTP1 protein.

DATA:



Western blot (WB) analysis of GSTP1 pAb at 1:500 dilution

Lane1:HEK293T whole cell lysate(40ug)

Lane2:HepG2 whole cell lysate(40ug)

Lane3:PC12 whole cell lysate(40ug)

Lane4:Aml-12 whole cell lysate(40ug)

Lane5:The liver tissue lysate of mouse(20ug)

Note:

For research use only, not for use in diagnostic procedure.