

## GRK5 (Q382) polyclonal antibody

Catalog: BCP00841

Host: Rabbit

Reactivity: Human, Mouse, Rat

### BackGround:

Heterotrimeric G protein-mediated signal transduction is a dynamically regulated process with the intensity of signal decreasing over time despite the continued presence of the agonist. This phenomenon, referred to as agonist-mediated desensitization, involves phosphorylation of the receptor by two classes of enzymes. The first class is comprised of the second messenger-regulated kinases, such as c-AMP dependent protein kinase A and protein kinase C. The second class includes the G protein-coupled receptor kinases (GRKs). At least seven members of the GRK family have been identified. These include rhodopsin kinase (GRK 1), two forms of b-adrenergic receptor kinase: GRK 2 (bARK, bARK1) and GRK 3 (bARK2), IT-11 (GRK 4), GRK 5, GRK 6 and GRK 7. Phosphorylation of receptors by GRKs appears to be strictly dependent on the receptor being in its agonist-activated state.

### Product:

Rabbit IgG, 1mg/ml in PBS with 0.02% sodium azide, 50% glycerol, pH7.2

### Molecular Weight:

~ 68 kDa

### Swiss-Prot:

P34947

### Purification&Purity:

The antibody was affinity-purified from rabbit antiserum by affinity-chromatography using epitope-specific immunogen and the purity is > 95% (by SDS-PAGE).

### Applications:

WB: 1:500~1:1000

IHC: 1:50~1:200

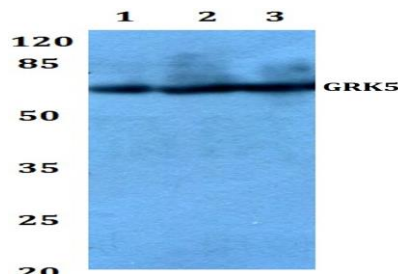
### Storage&Stability:

Store at 4 °C short term. Aliquot and store at -20 °C long term. Avoid freeze-thaw cycles.

### Specificity:

GRK5 (Q382) polyclonal antibody detects endogenous levels of GRK5 protein.

### DATA:



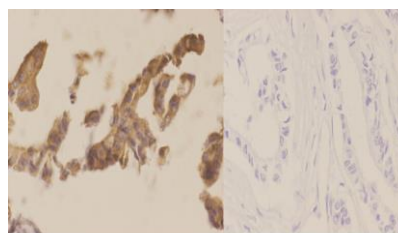
Western blot (WB) analysis of GRK5 (Q382) pAb at 1:1000 dilution

Lane1:PC3 whole cell lysate(20ug)

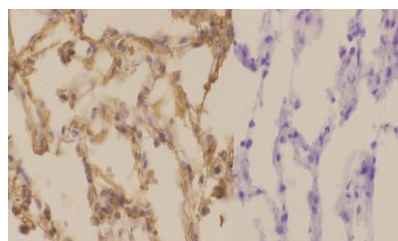
Lane2:HEK293T whole cell lysate(20ug)

Lane3:H9C2 whole cell lysate(20ug)

Lane4:MEF whole cell lysate(40ug)



Immunohistochemistry (IHC) analyzes of GRK5 (Q382) pAb in paraffin-embedded human breast carcinoma tissue at 1:50. showing cytoplasmic and nucleus staining. Negative control (the right) Using PBS instead of primary antibody, secondary antibody is Goat Anti-Rabbit IgG-biotin followed by avidin-peroxidase.



BS1981  
Lot C260321

Immunohistochemistry (IHC) analyzes of GRK5 (Q382) pAb in paraffin-embedded human lung carcinoma tissue at 1:50. showing cytoplasmic and nucleus staining. Negative control (the right) Using PBS instead of primary antibody, secondary antibody is Goat Anti-Rabbit IgG-biotin followed by avidin-peroxidase.

### Note:

For research use only, not for use in diagnostic procedure.

