

## GGPS1 polyclonal antibody

Catalog: BCP00817

Host: Rabbit

Reactivity: Human,Mouse,Rat

### BackGround:

GGPS1 (geranylgeranyl diphosphate synthase 1), also known as GGPPS, GGPPSase (geranylgeranyl pyrophosphate synthetase) or GGPPS1, is a member of the FPP/GGPP synthetase family of trans-prenyltransferases. Predominantly expressed in testis, heart and skeletal muscle, GGPS1 localizes to the cytoplasm and catalyzes the formation of geranylgeranyl pyrophosphate (GGPP), a precursor of geranylgeranylated proteins and carotenoids. GGPP is a major isoprenoid responsible for the C20-prenylation of proteins and the regulation of the nuclear hormone receptor LXR. More specifically, GGPS1 functions as an oligomeric molecule and mediates the condensation of farnesyl diphosphate (FPP) with isopen-tenyl diphosphate to yield GGPP. GGPS1 contains five amino acid motifs that are conserved in trans-prenyltransferases and three potential N-glycosylation sites.

### Product:

Rabbit IgG, 1mg/ml in PBS with 0.02% sodium azide, 50% glycerol, pH7.2

### Molecular Weight:

~ 35 kDa

### Swiss-Prot:

O95749

### Purification&Purity:

The antibody was affinity-purified from rabbit antiserum by affinity-chromatography using epitope-specific immunogen and the purity is > 95% (by SDS-PAGE).

### Applications:

WB: 1:500~1:1000

IHC: 1:50~1:200

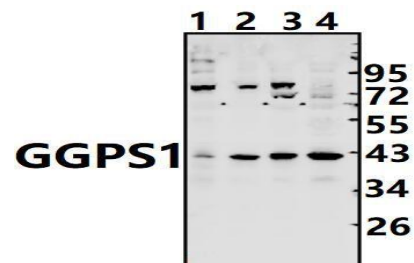
### Storage&Stability:

Store at 4 °C short term. Aliquot and store at -20 °C long term. Avoid freeze-thaw cycles.

### Specificity:

GGPS1 polyclonal antibody detects endogenous levels of GGPS1 protein.

### DATA:



Western blot (WB) analysis of GGPS1 pAb at 1:500 dilution

Lane1:C6 whole cell lysate(40ug)

Lane2:3T3-L1 whole cell lysate(40ug)

Lane3:A375 whole cell lysate(40ug)

Lane4:K562 whole cell lysate(40ug)

### Note:

For research use only, not for use in diagnostic procedure.