

## GBP1 (E99) polyclonal antibody

Catalog: BCP00810

Host: Rabbit

Reactivity: Human,Mouse,Rat

### BackGround:

GBP1 (guanylate binding protein 1) is a 592 amino acid protein member of the GTPase protein family and is able to bind specifically to guanine nucleotides such as GMP, GDP and GTP. GMP is hydrolyzed to GTP in two consecutive cleavage step, both of which are carried out by GBP1. Localized to the cytoplasm, GBP1 is expressed in endothelial cells of the vascular system and is induced by IFN- $\gamma$  during macrophage induction. GBP1 is thought to regulate the expression of MMP-1, which mediates the proliferation and invasiveness of endothelial cells. GBP1 plays a key role in regulating inflammatory cytokines and provides protection against vesicular stomatitis and encephalomyocarditis viruses. GBP1 expression is highly induced in the vessels of skin diseases such as psoriasis and Kaposi's sarcoma, making it a novel cellular activation marker that characterizes inflammatory cytokines of endothelial cells.

### Product:

Rabbit IgG, 1mg/ml in PBS with 0.02% sodium azide, 50% glycerol, pH7.2

### Molecular Weight:

~ 68 kDa

### Swiss-Prot:

P32455

### Purification&Purity:

The antibody was affinity-purified from rabbit antiserum by affinity-chromatography using epitope-specific immunogen and the purity is > 95% (by SDS-PAGE).

### Applications:

WB: 1:500~1:1000

IF: 1:50~1:200

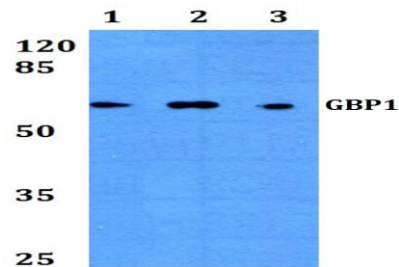
### Storage&Stability:

Store at 4 °C short term. Aliquot and store at -20 °C long term. Avoid freeze-thaw cycles.

### Specificity:

GBP1 (E99) polyclonal antibody detects endogenous levels of GBP1 protein.

### DATA:



Western blot (WB) analysis of GBP1 (E99) pAb at 1:1000 dilution

Lane1:HEK293T whole cell lysate(10ug)

Lane2:HCT116 whole cell lysate(10ug)

Lane3:The Kidney tissue lysate of Rat(20ug)

Lane4:The Kidney tissue lysate of Mouse(40ug)

### Note:

For research use only, not for use in diagnostic procedure.