

G3BP-1 (D226) polyclonal antibody

Catalog: BCP00799

Host: Rabbit

Reactivity: Human, Mouse

BackGround:

G3BP is one of the DNA-unwinding enzymes which prefers partially unwound 3'-tailed substrates and can also unwind partial RNA/DNA and RNA/RNA duplexes in an ATP-dependent fashion. This enzyme is a member of the heterogeneous nuclear RNA-binding proteins and is also an element of the Ras signal transduction pathway. It binds specifically to the Ras-GTPase-activating protein by associating with its SH3 domain. Several alternatively spliced transcript variants of this gene have been described, but the full-length nature of some of these variants has not been determined.

Product:

Rabbit IgG, 1mg/ml in PBS with 0.02% sodium azide, 50% glycerol, pH7.2

Molecular Weight:

~ 52 kDa

Swiss-Prot:

Q13283

Purification&Purity:

The antibody was affinity-purified from rabbit antiserum by affinity-chromatography using epitope-specific immunogen and the purity is > 95% (by SDS-PAGE).

Applications:

WB: 1:500~1:1000

IHC: 1:50~1:200

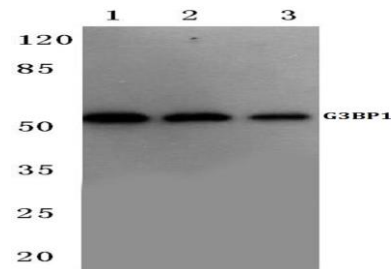
Storage&Stability:

Store at 4 °C short term. Aliquot and store at -20 °C long term. Avoid freeze-thaw cycles.

Specificity:

G3BP-1 (D226) polyclonal antibody detects endogenous levels of G3BP-1 protein.

DATA:

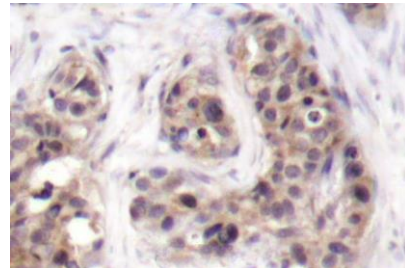


Western blot (WB) analysis of G3BP-1 (D226) polyclonal antibody at 1:500 dilution

Lane1:A549 cell lysate

Lane2:Mouse heart tissue lysate

Lane3:Rat heart tissue lysate



Immunohistochemistry (IHC) analyzes of G3BP-1 (D226) pAb in paraffin-embedded human lymphoma tissue.

Note:

For research use only, not for use in diagnostic procedure.