

Fyn (phospho-Y530) polyclonal antibody

Catalog: BCP00798

Host: Rabbit

Reactivity: Human, Mouse, Rat

BackGround:

Fyn is a membrane-associated, non-receptor protein tyrosine kinase approximately 59kDa, which belongs to the Src family of cytoplasmic tyrosine kinases. Fyn is very strongly similar to mouse Fyn, v-yes and c-src. Fyn is expressed predominately in tissues of neuronal and hematopoietic origin. Neuronal Fyn and hematopoietic Fyn differ at the junction of the SH2 and kinase domains due to tissue specific alternative splicing. Fyn has been shown to be involved in B cell and T cell activation as well as keratinocyte differentiation. In T cells, Fyn associates with the T-cell antigen receptor and Thy1.

Product:

Rabbit IgG, 1mg/ml in PBS with 0.02% sodium azide, 50% glycerol, pH7.2

Molecular Weight:

~ 59 kDa

Swiss-Prot:

P06241

Purification&Purity:

The antibody was affinity-purified from rabbit antiserum by affinity-chromatography using epitope-specific immunogen and the purity is > 95% (by SDS-PAGE).

Applications:

WB: 1:500~1:1000

IHC: 1:50~1:200

IP: 1:50~1:200

Storage&Stability:

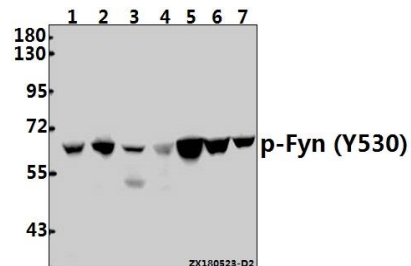
Store at 4 °C short term. Aliquot and store at -20 °C long term. Avoid freeze-thaw cycles.

Specificity:

p-Fyn (Y530) polyclonal antibody detects endogenous levels of Fyn protein only when phosphorylated at

Tyr530.

DATA:



Western blot (WB) analysis of p-Fyn (Y530) pAb at 1:1000 dilution

Lane1:HepG2 whole cell lysate(40ug)

Lane2:A375 whole cell lysate(40ug)

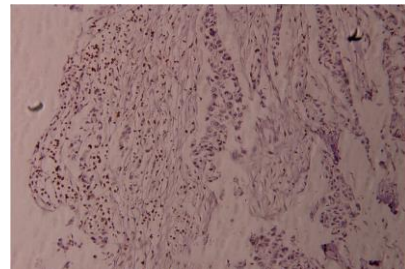
Lane3:HEK293T whole cell lysate(40ug)

Lane4:PC12 whole cell lysate(40ug)

Lane5:AML-12 whole cell lysate(40ug)

Lane6:C6 whole cell lysate(40ug)

Lane7:CT-26 whole cell lysate(40ug)



Immunohistochemistry (IHC) analyzes of p-Fyn (Y530) pAb in paraffin-embedded human breast carcinoma tissue at 1:100.

Note:

For research use only, not for use in diagnostic procedure.