

FXR2 (E576) polyclonal antibody

Catalog: BCP00795

Host: Rabbit

Reactivity: Human, Mouse, Rat

BackGround:

The FMR1 protein (or FMRP) is an RNA-binding protein that associates with polyribosomes and is a likely component of a messenger ribonuclear protein (mRNP) particle. It contains several features that are characteristics of RNA-binding proteins, including two hnRNPk homology (KH) domains and an RGG amino acid motif (RGG box). FMR1 can also interact with two fragile X syndrome related factors, FXR1 and FXR2, and these proteins form heterodimers through their N-terminal coilcoiled domains. FMR1 localizes to both the nucleus and the cytoplasm, and since it contains both a nuclear localization signal and a nuclear export signal it is also implicated in the nucleo-cytoplasmic transport of mRNAs.

Product:

Rabbit IgG, 1mg/ml in PBS with 0.02% sodium azide, 50% glycerol, pH7.2

Molecular Weight:

~ 74 kDa

Swiss-Prot:

P51116

Purification&Purity:

The antibody was affinity-purified from rabbit antiserum by affinity-chromatography using epitope-specific immunogen and the purity is > 95% (by SDS-PAGE).

Applications:

WB: 1:500~1:1000

IHC/IF: 1:50~1:200

IP: 1:10~1:100

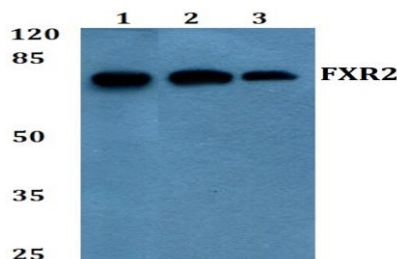
Storage&Stability:

Store at 4 °C short term. Aliquot and store at -20 °C long term. Avoid freeze-thaw cycles.

Specificity:

FXR2 (E576) polyclonal antibody detects endogenous levels of FXR2 protein.

DATA:



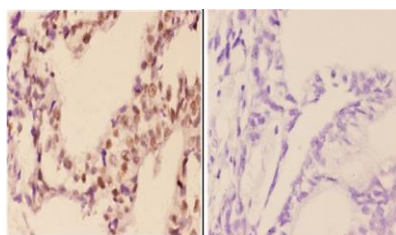
Western blot (WB) analysis of FXR2 (E576) pAb at 1:500 dilution

Lane1:HEK293T whole cell lysate(40ug)

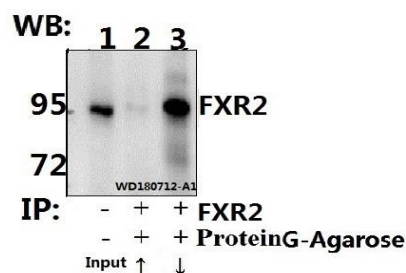
Lane2:K562 whole cell lysate(40ug)

Lane3:H9C2 whole cell lysate(40ug)

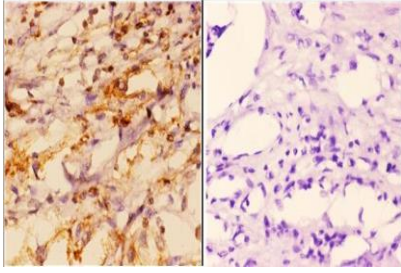
Lane4:MEF whole cell lysate(40ug)



Immunohistochemistry (IHC) analyzes of FXR2 (E576) pAb in paraffin-embedded human colon carcinoma tissue at 1:50, showing cytoplasmic and nuclear staining. Negative control (the right) Using PBS instead of primary antibody, secondary antibody is Goat Anti-Rabbit IgG-biotin followed by avidin-peroxidase.



Immunoprecipitation of HEK293T cell lysate using FXR2 (E576) pAb (Sepharose Bead Conjugate) #BD0048 (lane 2 and lane 3). Lane 1 is 30% input. The western blot was probed using FXR2 (E576). “↑” (supernatant); “↓” (deposition)



Immunohistochemistry (IHC) analyzes of FXR2 (E576) pAb in paraffin-embedded human kidney carcinoma tissue at 1:50, showing cytoplasmic and nuclear staining. Negative control (the right) Using PBS instead of primary antibody, secondary antibody is Goat Anti-Rabbit IgG-biotin followed by avidin-peroxidase.

Note:

For research use only, not for use in diagnostic procedure.