

FUK (Q26) polyclonal antibody

Catalog: BCP00793

Host: Rabbit

Reactivity: Human,Mouse,Rat

BackGround:

Blood group antigen recognition, metastasis and inflammation utilize fucose, a sugar found in glycoproteins and glycolipids. Fucokinase, also designated L-fucose kinase or FUK, is a 1,084 amino acid enzyme that plays a role in the salvage pathway of fucose reutilization. A member of the GHMP kinase family, Fucokinase exists as two alternative splice variants and catalyzes L-fucose phosphorylation to form β -L-fucose 1-phosphate. The gene encoding Fucokinase maps to human chromosome 16, which encodes over 900 genes and comprises nearly 3% of the human genome. The GAN gene is located on chromosome 16 and, with mutation, may lead to giant axonal neuropathy, a nervous system disorder characterized by increasing malfunction with growth. The rare disorder Rubinstein-Taybi syndrome is also associated with chromosome 16, as is Crohn's disease, which is a gastrointestinal inflammatory condition.

Product:

Rabbit IgG, 1mg/ml in PBS with 0.02% sodium azide, 50% glycerol, pH7.2

Molecular Weight:

~ 118 kDa

Swiss-Prot:

Q8N0W3

Purification&Purity:

The antibody was affinity-purified from rabbit antiserum by affinity-chromatography using epitope-specific immunogen and the purity is > 95% (by SDS-PAGE).

Applications:

WB: 1:500~1:1000

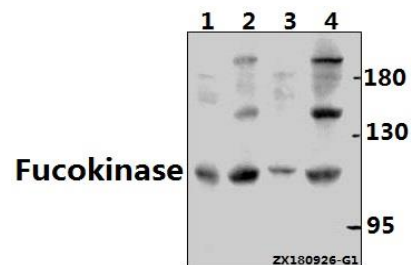
Storage&Stability:

Store at 4 °C short term. Aliquot and store at -20 °C long term. Avoid freeze-thaw cycles.

Specificity:

Fucokinase (Q26) polyclonal antibody detects endogenous levels of Fucokinase protein.

DATA:



Western blot (WB) analysis of Fucokinase (Q26) polyclonal antibody at 1:500 dilution

Lane1:CT26 whole cell lysate(30ug)

Lane2:PC12 whole cell lysate(40ug)

Lane3:Beas-2B whole cell lysate(40ug)

Lane4:Hela whole cell lysate(40ug)

Note:

For research use only, not for use in diagnostic procedure.