

FoxK1 (G698) polyclonal antibody

Catalog: BCP00784

Host: Rabbit

Reactivity: Human,Mouse,Rat

BackGround:

FOXK1 is expressed in these cells and regulates cell cycle progression through an interaction with its downstream target the cyclin-dependent kinase inhibitor p21 (CIP). Loss of FOXK1 in mice results in growth retardation and a severe impairment in skeletal muscle regeneration following injury. FOXK1 also shows expression in immature tissues of brain, eye, heart, lung and thymus. It also is predominantly expressed in many malignant tissues, such as tumors of the brain, colon and lymph node.

Product:

Rabbit IgG, 1mg/ml in PBS with 0.02% sodium azide, 50% glycerol, pH7.2

Molecular Weight:

~ 75, 97 kDa

Swiss-Prot:

P85037

Purification&Purity:

The antibody was affinity-purified from rabbit antiserum by affinity-chromatography using epitope-specific immunogen and the purity is > 95% (by SDS-PAGE).

Applications:

WB: 1:500~1:1000

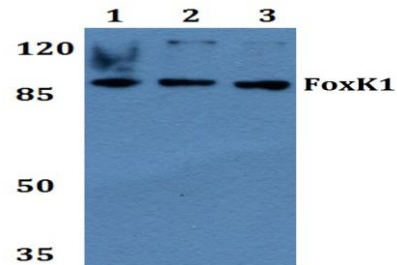
IHC: 1:50~1:200

Storage&Stability:

Store at 4 °C short term. Aliquot and store at -20 °C long term. Avoid freeze-thaw cycles.

Specificity:

FoxK1 (G698) polyclonal antibody detects endogenous levels of FoxK1 protein.

DATA:

Western blot (WB) analysis of FoxK1 (G698) pAb at 1:500 dilution

Lane1:K562 whole cell lysate(40ug)

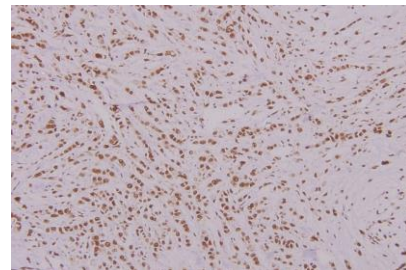
Lane2:HCT116 whole cell lysate(40ug)

Lane3:A549 whole cell lysate(40ug)

Lane4:MCF-7 whole cell lysate(40ug)

Lane5:CT26 whole cell lysate(40ug)

Lane6:C6 whole cell lysate(40ug)



Immunohistochemistry (IHC) analyzes of FoxK1 (G698) pAb in paraffin-embedded human breast carcinoma tissue at 1:100.

Note:

For research use only, not for use in diagnostic procedure.