

FGFR1 (phospho-Y154) polyclonal antibody

Catalog: BCP00773

Host: Rabbit

Reactivity: Human,Mouse,Rat

BackGround:

FGFR1 (fibroblast growth factor receptor 1) is a member of the fibroblast growth factor receptor family containing an Ig-like domain and a tyrosine kinase domain. This receptor has multiple isoforms and is a Type I membrane protein. FGFR1 is a widely expressed membrane receptor, with distinct isoforms expressed in specific tissues. FGFR1 binds fibroblast growth factor and induces mitogenesis and cellular differentiation. Defects in FGFR1 result in Pfeiffer syndrome associated with craniosynostosis. FGFR1 can be modified by phosphorylation and can bind basic/acidic fibroblast factor depending on the receptor isoform. FGFR1 has been shown to interact with N-cadherin and NCAM.

Product:

Rabbit IgG, 1mg/ml in PBS with 0.02% sodium azide, 50% glycerol, pH7.2

Molecular Weight:

~ 92, 120,145 kDa

Swiss-Prot:

P11362

Purification&Purity:

The antibody was affinity-purified from rabbit antiserum by affinity-chromatography using epitope-specific immunogen and the purity is > 95% (by SDS-PAGE).

Applications:

WB: 1:500~1:1000

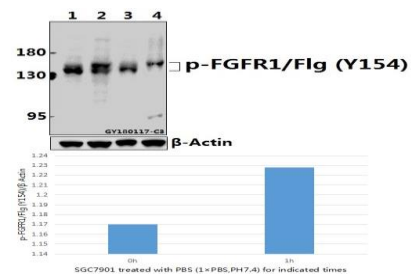
Storage&Stability:

Store at 4 °C short term. Aliquot and store at -20 °C long term. Avoid freeze-thaw cycles.

Specificity:

p-FGFR1 (Y154) polyclonal antibody detects endogenous levels of FGFR1 protein only when phosphorylated at Tyr154.

DATA:



Western blot (WB) analysis of p-FGFR1/Flg (Y154) pAb at 1:500 dilution

Lane1:SGC7901 whole cell lysate(40ug)

Lane2:SGC7901 treated with PBS (1 ×PBS,PH7.4) for 1 hour whole cell lysate(40ug)

Lane3:C6 whole cell lysate(40ug)

Lane4:3T3-L1 whole cell lysate(40ug)

Note:

For research use only, not for use in diagnostic procedure.