

## FGF 22 (A96) polyclonal antibody

Catalog: BCP00770

Host: Rabbit

Reactivity: Human,Mouse,Rat

### BackGround:

Acidic and basic fibroblast growth factors (FGFs) are members of a family of multifunctional polypeptide growth factors that stimulate proliferation of cells of mesenchymal, epithelial and neuroectodermal origin. Like other growth factors, FGFs act by binding and activating specific cell surface receptors. These receptors usually contain an extracellular ligand-binding region containing three immunoglobulin-like domains, a trans-membrane domain and a cytoplasmic tyrosine kinase domain. Fibroblast growth factor- 22 (FGF-22) is a secreted protein whose gene is localized to human chromosome 19p13.3. FGF-22 is expressed preferentially in the inner root sheath of the hair follicle, suggesting that it is important in hair development.

### Product:

Rabbit IgG, 1mg/ml in PBS with 0.02% sodium azide, 50% glycerol, pH7.2

### Molecular Weight:

~ 20 kDa

### Swiss-Prot:

Q9HCT0

### Purification&Purity:

The antibody was affinity-purified from rabbit antiserum by affinity-chromatography using epitope-specific immunogen and the purity is > 95% (by SDS-PAGE).

### Applications:

WB: 1:500~1:1000

IHC: 1:50~1:200

IF: 1:50~1:200

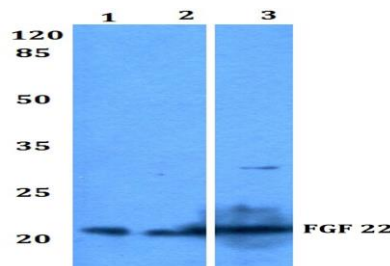
### Storage&Stability:

Store at 4 °C short term. Aliquot and store at -20 °C long term. Avoid freeze-thaw cycles.

### Specificity:

FGF-22 (A96) polyclonal antibody detects endogenous levels of FGF-22 protein.

### DATA:



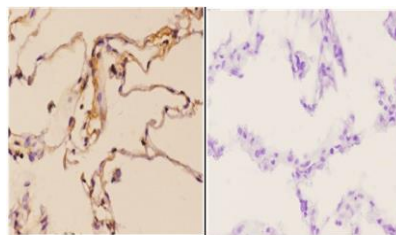
Western blot (WB) analysis of FGF 22 (A96) pAb at 1:500 dilution

Lane1:HEK293T whole cell lysate(40ug)

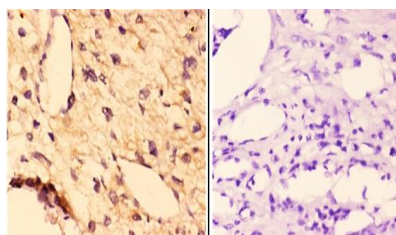
Lane2:MCF-7 whole cell lysate(40ug)

Lane3:C6 whole cell lysate(40ug)

Lane4:BV2 whole cell lysate(40ug)



Immunohistochemistry (IHC) analyzes of FGF 22 (A96) pAb in paraffin-embedded human lung carcinoma tissue at 1:50,showing secreted staining.Negative control (the right)Using PBS instead of primary antibody, secondary antibody is Goat Anti-Rabbit IgG-biotin followed by avidin-peroxidase.



BS3026  
Lot CF36131

Immunohistochemistry (IHC) analyzes of FGF 22 (A96) pAb in paraffin-embedded human kidney carcinoma tissue at 1:50,showing secreted staining.Negative control (the right)Using PBS instead of primary antibody, secondary antibody is Goat Anti-Rabbit IgG-biotin followed by avidin-peroxidase.

### Note:

For research use only, not for use in diagnostic procedure.