

ETAR (N427) polyclonal antibody

Catalog: BCP00752

Host: Rabbit

Reactivity: Human,Mouse,Rat

BackGround:

Endothelin receptor A (ETAR), also known as EDNRA, ET1 receptor, ETA, EDN1 and ET-AR, is a member of the guanine-binding regulatory protein-coupled receptor family. ETAR binds endothelins and has the highest affinity for its ligand, ET1, as compared to the ETBR receptor. Both ET receptors, ETAR and ETBR, are activated by ET1, which results in inhibition of active lens sodium-potassium transport. Activation of the ET receptors also causes an increase in cytoplasmic calcium concentration in cultured lens epithelial cells. In addition, ETAR induces arachidonic acid accumulation. ETAR has seven hydrophobic transmembrane domains and is expressed in aorta, lung, atrium, kidney, placenta and prostate. Specifically, placental vascular smooth muscle cells (PVSMCs) exclusively express ETAR.

Product:

Rabbit IgG, 1mg/ml in PBS with 0.02% sodium azide, 50% glycerol, pH7.2

Molecular Weight:

~ 50 kDa

Swiss-Prot:

P25101

Purification&Purity:

The antibody was affinity-purified from rabbit antiserum by affinity-chromatography using epitope-specific immunogen and the purity is > 95% (by SDS-PAGE).

Applications:

WB: 1:500~1:1000

IHC: 1:50~1:200

IF: 1:50~1:200

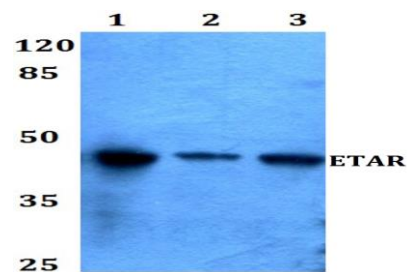
Storage&Stability:

Store at 4 °C short term. Aliquot and store at -20 °C long term. Avoid freeze-thaw cycles.

Specificity:

ETAR (N427) polyclonal antibody detects endogenous levels of ETAR protein.

DATA:



Western blot (WB) analysis of ETAR (N427) pAb at 1:500 dilution

Lane1:C6 whole cell lysate(40ug)

Lane2:BV2 whole cell lysate(40ug)

Lane3:HCT116 whole cell lysate(40ug)

Lane4:SGC7901 whole cell lysate(40ug)

Lane5:A549 whole cell lysate(40ug)

Note:

For research use only, not for use in diagnostic procedure.