

EKI2 (W78) polyclonal antibody

Catalog: BCP00710

Host: Rabbit

Reactivity: Human,Mouse,Rat

BackGround:

Ethanolamine kinase 2, highly specific for ethanolamine phosphorylation. Does not have choline kinase activity.

Product:

Rabbit IgG, 1mg/ml in PBS with 0.02% sodium azide, 50% glycerol, pH7.2

Molecular Weight:

~ 55 kDa

Swiss-Prot:

Q9NVF9

Purification&Purity:

The antibody was affinity-purified from rabbit antiserum by affinity-chromatography using epitope-specific immunogen and the purity is > 95% (by SDS-PAGE).

Applications:

WB: 1:500~1:1000

Storage&Stability:

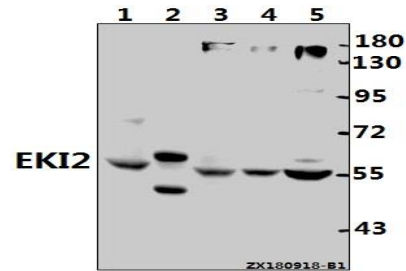
Store at 4 °C short term. Aliquot and store at -20 °C long term. Avoid freeze-thaw cycles.

Specificity:

EKI2 (W78) polyclonal antibody detects endogenous lev-

els of EKI2 protein.

DATA:



Western blot (WB) analysis of EKI2 (W78) polyclonal antibody at 1:500 dilution

Lane1:PC12 whole cell lysate(40ug)

Lane2:The Kidney tissue lysate of Mouse(20ug)

Lane3:A2780 whole cell lysate(40ug)

Lane4:L02 whole cell lysate(40ug)

Lane5:HEK293T whole cell lysate(40ug)

Note:

For research use only, not for use in diagnostic procedure.