

**eIF4B (phospho-S422) polyclonal antibody**

Catalog: BCP00706

Host: Rabbit

Reactivity: Human, Mouse, Rat

**Background:**

Required for the binding of mRNA to ribosomes. Functions in close association with EIF4-F and EIF4-A. Binds near the 5'-terminal cap of mRNA in presence of EIF4-F and ATP. Promotes the ATPase activity and the ATP-dependent RNA unwinding activity of both EIF4-A and EIF4-F. It is phosphorylated at Ser-422 by RPS6KA1 and RPS6KB1. Phosphorylation enhances the affinity of EIF4B for the EIF3 complex

**Product:**

Rabbit IgG, 1mg/ml in PBS with 0.02% sodium azide, 50% glycerol, pH7.2

**Molecular Weight:**

~ 80 kDa

**Swiss-Prot:**

P23588

**Purification&Purity:**

The antibody was affinity-purified from rabbit antiserum by affinity-chromatography using epitope-specific immunogen and the purity is > 95% (by SDS-PAGE).

**Applications:**

WB: 1:500~1:1000

IHC: 1:50~1:200

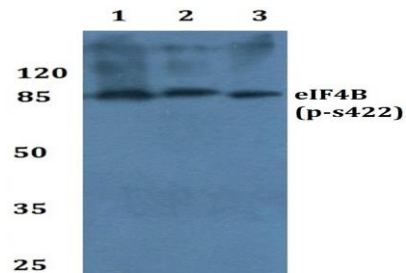
**Storage&Stability:**

Store at 4 °C short term. Aliquot and store at -20 °C long term. Avoid freeze-thaw cycles.

**Specificity:**

p-eIF4B (S422) polyclonal antibody detects endogenous levels of eIF4B protein only when phosphorylated at

Ser422

**DATA:**

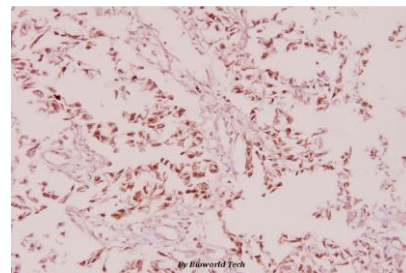
Western blot (WB) analysis of p-eIF4B (S422) pAb at 1:500 dilution

Lane1: The Brain tissue lysate of Rat(40ug)

Lane2: K562 whole cell lysate(40ug)

Lane3: A375 whole cell lysate(40ug)

Lane4: HCT116 whole cell lysate(40ug)



Immunohistochemistry (IHC) analyzes of p-eIF4B (S422) pAb in paraffin-embedded human breast carcinoma tissue at 1:100.

**Note:**

For research use only, not for use in diagnostic procedure.